



Save to board  
ARTC3000Su...



Save

# SIGGRAPH 2025

## Convergence of Art, Technology, and Nature

[LISTEN](#)

SIGGRAPH 2025 Art Gallery Chair Francesca Franco welcomes friends and colleagues Ernest Edmonds and Matthew Attard to the podcast. These distinguished artists discuss their pivotal works and how generative art can bridge the gap between the natural world and digital technology.

**SIGGRAPH 2025 invites all trailblazers to submit their groundbreaking research and discoveries for the opportunity to present their work to a community of forward-thinking experts. Explore the perfect program to showcase your contributions. [Browse open programs and submit your work today!](#)**



Kristy Pron  
SIGGRAPH 2027 Conference Chair

Image Credit: Kristy Pron

### Kristy Pron Leads SIGGRAPH 2027

Kristy Pron is ready to create connections across communities and industries, inspire, and innovate at SIGGRAPH 2027.

[READ MORE](#)



Image Credit: 2025 Daiki Taniguchi

### Unlock XR Potential

Capable of processing millions of Gaussians, it's time to grab your notebooks and dive into this project that enhances XR.

[READ MORE](#)



Image credit: © Universal Studios

### 'Twisters' Visual Magic

Go behind the scenes of the film 'Twisters' to learn how the special and visual effects teams created the iconic tornadoes.

[READ MORE](#)

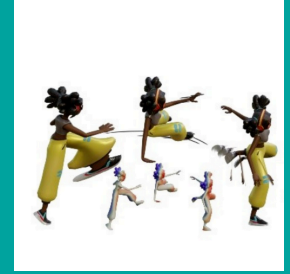


Image Credit: Model and animation are downloaded from Mixamo

### 3D Smear Innovation

This Blender-integrated tool brings the dynamic style of 2D smear frames to 3D animation, offering both beginner and advanced customization.

[READ MORE](#)

#### VFX Society

Riding on the Back of Giants for Dune: Part Two

[READ MORE](#)

#### Animation Magazine

Behind the Bewitching Visual Effects of 'Wicked'

[READ MORE](#)

#### AR Insider

Can AR + AI Elevate eCommerce?

[READ MORE](#)

Submit to  
SIGGRAPH 2025

Take the first step and inspire another year of research, development, creativity, and production.

### ACM SIGGRAPH Member Corner

Are you a part of the global computer graphics and interactive techniques community? Elevate your professional presence by showcasing your skills, achievements, and projects through the ACM SIGGRAPH Member Profiles! Every month, longtime volunteer Theresa-Marie Rhyne compiles profiles from our members. See the latest profiles submitted:

- [Dmitry Drapikovsky](#)
- [Kouta Minamizawa](#)
- [Cal Chiu](#)
- [Min H. Kim](#)

If you are interested in nominating an ACM SIGGRAPH Member for a profile, or would like to provide your own, submit to the **[ACM SIGGRAPH Membership Chair](#)**.



[Manage](#) your preferences | [Opt Out](#) using TrueRemove™

Got this as a forward? [Sign up](#) to receive our future emails.

View this email [online](#).

330 N. Wabash Ave. Suite 2000 | Chicago, IL 60611-3586 US

This email was sent to s2006art@gmail.com.

To continue receiving our emails, add us to your address book.

