

SIGGRAPH 1979

Hyatt Regency, Chicago, Illinois

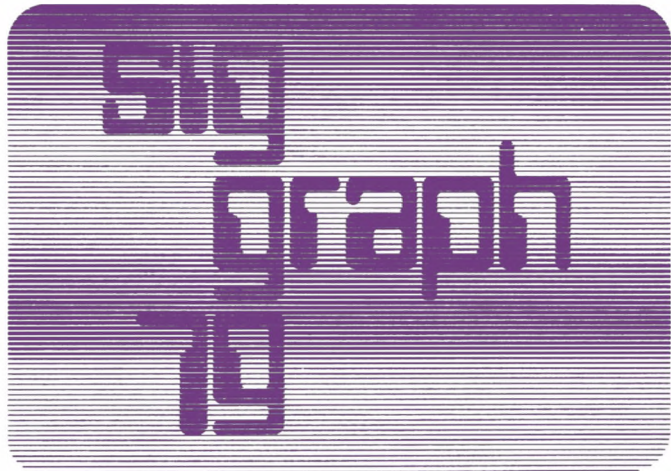
August 6-8, 1979

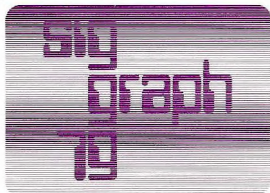


IEEE Computer Society conference on

**pattern recognition
and image processing**

August 6-8, 1979 Hyatt Regency Chicago O'Hare, Illinois





John Dill
General Motors Research
Laboratory
Charles Eastman
Carnegie-Mellon University
Henry Fuchs
University of
North Carolina

Don Greenberg
Cornell University
Nelson Max
Lawrence Livermore
Laboratory
Fanya Montalvo
Lawrence Berkeley
Laboratory

Carl Machover
Machover Associates
Corporation
Richard Puk
Megatek Corporation
Robert Sproull
Carnegie-Mellon University

Victor Wallace
University of Kansas
Tutorials Chairmen
Norman Badler
University of Pennsylvania

Lee Metrick
Tektronix, Inc.
Tutorials Committee

Dan Bergeron
University of
New Hampshire
James Blinn
Jet Propulsion Laboratory
Kellogg Booth
University of Waterloo

Ed Catmull
New York Institute
of Technology
Michael Dearing
International Harvester
Company

James Foley
George Washington
University
Exhibits Committee
Maxine Brown
Hewlett-Packard
James George
Integrated Software Systems
Corporation

Steven Levine
Lawrence Livermore
Laboratory

Exhibit Hall Coordination
Fred Degetberg
Bushido, Inc.

**Vendor Forum
Coordination**
Wayne Huelskoetter
Dicomed, Inc.

CHICAGO VISUALIZATION WEEK IN BRIEF

Sunday, August 5, 1979	
PRIP TUTORIAL	9:30-6:00 P.M.
Monday, August 6, 1979	
6 SIGGRAPH TUTORIALS	9:30-6:30 P.M.
TUTORIALS RECEPTION	7:00-9:00 P.M.
USER GROUPS	9:30-10:00 P.M.
PRIP SESSIONS	9:30-6:00 P.M.
PRIP COCKTAIL RECEPTION	7:00-9:00 P.M.
Tuesday, August 7, 1979	
6 SIGGRAPH TUTORIALS	9:30-6:30 P.M.
SIGGRAPH/PRIP RECEPTION	8:00-10:00 P.M.
EQUIPMENT EXPO	12:00-8:00 P.M.
VENDOR FORUM	12:00-8:00 P.M.
USER GROUPS	9:30-10:00 P.M.
PRIP SESSIONS	9:30-6:00 P.M.
Wednesday, August 8, 1979	
SIGGRAPH SESSIONS	9:30-6:00 P.M.
SCIENCE SHOW	8:00-10:00 P.M.
EQUIPMENT EXPO	10:00-6:00 P.M.
EXPO RECEPTION	6:00-8:00 P.M.
VENDOR FORUM	10:00-6:00 P.M.
FILM & VIDEO	10:00-8:00 P.M.
PRIP SESSIONS	9:30-6:00 P.M.
Thursday, August 9, 1979	
SIGGRAPH SESSIONS	9:30-6:00 P.M.
ART & ENTERTAINMENT GRAPHICS	8:00-10:00 P.M.
EQUIPMENT EXPO	10:00-6:00 P.M.
SPECIAL INTEREST DINNERS	6:00-8:00 P.M.
VENDOR FORUM	10:00-6:00 P.M.
FILM & VIDEO	10:00-8:00 P.M.
Friday, August 10, 1979	
SIGGRAPH SESSIONS	9:30-4:00 P.M.
FILM & VIDEO	10:00-2:00 P.M.

MONDAY MORNING

Tutorial Sessions 9:30 a.m.-12:00 noon

6 SIGGRAPH TUTORIALS

Tutorial Chairs:

Norman Badler, University of Pennsylvania
Lee Metrick, Tektronix, Inc.

INTRODUCTION TO COMPUTER GRAPHICS

Rosemont A

Chair: Kellogg Booth, University of Waterloo

The fundamentals of computer graphics are covered in this tutorial including: uses for computer graphics, hardware, software, raster graphics, graphics standards, commercial packages, documentation graphics and computer animation.

Instructors:

John Beatty, University of Waterloo
Lansing Hatfield, Lawrence Livermore Laboratory
Carl Machover, Machover Associates
Marcell Wein, National Research Council of Canada

INTRODUCTION TO RASTER GRAPHICS

Rosemont B

Chair: Jim Foley, George Washington University

This tutorial introduces the basic hardware, software and application concepts for raster graphics. No prior graphics knowledge is required but experience with computers is helpful. Several commercial systems, both color and black and white, will be discussed, followed by descriptions of hardcopy raster devices. Software algorithms and applications to industry and business will be presented as well.

General Chairmen

Tom DeFanti and
Bruce H. McCormick
University of Illinois at
Chicago Circle

Local Arrangements and Registration

Miriam Holden
Argonne National
Laboratory

Treasurer

Mary F. Scott
University of Illinois at
Chicago Circle

Audio-Visual Coordination

Patricia Cole
NASA Langley
Phillip Morton
and Jane Veeder
Art Institute of Chicago
Daniel J. Sandin
University of Illinois at
Chicago Circle

User Group Meetings

Harvey Z. Kriloff
Boeing Computer Services

General Coordination

Copper Giloth
University of Illinois at
Chicago Circle

Zsuzsanna E. Molnar
University of Illinois at
Chicago Circle

Ralph Orlick
University of Illinois at
Chicago Circle

Graphic Designers

Faramarz Rahbar
Nina Rahbar
Rahbar Design & Associates

Past Conference Chairman

S. H. Chasen
Lockheed-Georgia
Company

Program Chairman

Bary W. Pollack
University of British Columbia

Program Committee and Senior Referees

James Blinn
Jet Propulsion Laboratory
Kellogg Booth
University of Waterloo

Instructors:

John Dalton, Goddard Space Flight Center
John Godfrey, Mellon National Corporation
Stephen Levine, Lawrence Livermore Laboratory
Lee Metrick, Tektronix, Inc.
William Newman, Xerox Palo Alto Research Center
Robert Sproull, Carnegie-Mellon University

COMPUTER AIDED DESIGN

Rosemont D

Chair: Michael P. Dearing, International Harvester Company
This tutorial covers key issues in selection, design, and implementation of CAD systems. The first day focuses on getting contemporary and available technology to work for you and includes CAD economics, system design, mini-computer systems, and data-base considerations. The second day covers person-machine interaction, geometric modeling and the future of CAD.

Instructors:

Gerald W. Bayer, Kodak
Frank W. Bliss, Ford Motor Company
Charles Eastman, Carnegie-Mellon University
George Hyman, Ford Motor Company
Phil Kennecott, General Electric Company
Harvey Z. Kriloff, Boeing Commercial Airplane Company
Ralph E. Miller, Boeing Commercial Airplane Company
Ari Requicha, University of Rochester
Herb Voelcker, University of Rochester

ADVANCED RASTER GRAPHICS

Rosemont C

Chair: Jim Blinn, Jet Propulsion Laboratory
This tutorial on advanced image synthesis with raster systems is intended to bring the attendee up to date on the most recent developments in computer image synthesis. It will concentrate on the production of realistic-looking images of 3-D scenes, emphasizing mathematical modeling techniques, lighting simulation and optimal display utilization. It will serve as a useful background for understanding state-of-the-art papers on this subject in the conference. One session will be joint with the Animation tutorial.

Instructors:

Frank Crow, Ohio State University
Alvy Ray Smith, New York Institute of Technology

ANIMATION GRAPHICS

American/Braniff

Chair: Ed Catmull, New York Institute of Technology
This tutorial concentrates on computer animation techniques and covers the application of the computer to the production of images for videotape or film. Presentations will be made on two- and three-dimensional animation, assisting conventional animation, special effects, and commercial applications.

Instructors:

Gary Demos, Information International, Inc.
Tony Diment, Logica Ltd.
Lee Harrison, Computer Image Corporation
Mark Levoy, Cornell University
Alvy Ray Smith, New York Institute of Technology
Garland Stern, New York Institute of Technology
Marceli Wein, National Research Council
Lance Williams, New York Institute of Technology

GRAPHICS STANDARDS

NWO/TWA & Allegheny

Chair: R. Daniel Bergeron, University of New Hampshire
This tutorial is aimed at providing an understanding of the Graphics Standards Report and its effect on new systems. There will be two groups formed—one of managers, and one of programmers. The managers' section will concentrate on evaluation of general-purpose graphics packages and the effect standards have on management of a project. The programmers' section is for those who wish a fairly detailed exposure to the background, philosophy, and important techniques and algorithms useful in implementing a device-independent graphics package.

Instructors:

Ingrid Carlborn, Brown University
Robert Ellis, Boeing Computer Services
Bertram Herzog, University of Colorado
James Michener, Intermetrics, Inc.
Richard Puk, Megatek Corporation
James Warner, University of Colorado

MONDAY AFTERNOON

SIGGRAPH TUTORIALS LUNCHEON

Social Function 1:00-1:45 p.m.
Rosemont A, B, C, D
Tutorials 2:30-6:30 p.m.

6 SIGGRAPH TUTORIALS (continued)

MONDAY EVENING

SIGGRAPH TUTORIALS RECEPTION

Social Function 7:00-9:00 p.m.
Rosemont A, B

TUESDAY MORNING

Tutorials Session 9:30-12:00 noon
6 SIGGRAPH TUTORIALS (continued)

TUESDAY AFTERNOON

SIGGRAPH TUTORIALS LUNCHEON

Social Function 1:00-1:45 p.m.
Rosemont A, B, C, D
Tutorials Session 2:30-6:30 p.m.

6 SIGGRAPH TUTORIALS (conclusion)

TUESDAY EVENING

SIGGRAPH/PRIP CONFERENCE RECEPTION

Social Function 8:00-10:00 p.m.
Rosemont A, B, C, D

WEDNESDAY MORNING

Session WA1 9:30 a.m.-12:10 p.m.
Rosemont A, B

SIGGRAPH/PRIP SESSION

(Co-Sponsored by PRIP)

Co-Chairs:

- R. Bajcsy, University of Pennsylvania
- B. Pollack, University of British Columbia
- 0930 Raster Image File Format (RIFF): An Approach to Problems in Image Management
P. G. Selfridge and K. R. Sloan, Jr., University of Rochester
- 0950 An Understanding of Moire Patterns in the Reproduction of Halftone Images
A. Steinbach and K. Wong, IBM
- 1010 Generation of 3D Surface Descriptions from Images of Pattern-Illuminated Objects
R. Potmesil, Rensselaer Polytechnic Institute
- 1030 Tutorial on Compensation Tables
E. Catmull, New York Institute of Technology

- 1050 Break
 1110 Simple Animation by Changing Color Definitions
 R. Shoup, Xerox Palo Alto Research Center
 1130 An Improved Illumination Model for Shaded Displays
 T. Whitted, Bell Laboratories
 1150 Some Raster Graphics Extensions to the Core System
 J. Foley, J. Templeton and D. Dastyar,
 George Washington University

Session WA2 9:30 a.m.-12:10 p.m.
 Rosemont C, D

OVERVIEW SESSION

- Chair: R. Puk, Megatek Corporation
 0930 General-Purpose Graphics System for Computer-Aided Design
 S. Uno and H. Matsuka, Tokyo Scientific Center, IBM Japan
 0950 Computer Graphics for Large-Scale Two- and Three-Dimensional Analysis of Complex Geometries
 B. Brown, Lawrence Livermore Laboratory
 1010 Stereoscopic Computer Graphics for Simulation and Modeling
 J. Roese and L. McCleary, Naval Ocean Systems Center, Dept. of the Navy
 T.O.P.E.S.
 W. Pferrd, Bell Laboratories
 1050 Break
 1110 Videocel
 H. Towles, Computer Creations
 1130 Digital Video Display Systems and Dynamic Graphics
 R. Baecker, University of Toronto
 1150 Evaluation and Criticism of the Core Graphics System
 D. Cahn, N. Johnston and W. Johnston, Lawrence Berkeley Laboratory

WEDNESDAY AFTERNOON

WELCOME 2:00 p.m.
 Rosemont A, B / United
 Bruce H. McCormick, University of Illinois at Chicago Circle
 KEYNOTE ADDRESS 2:10 p.m.
 Rosemont A, B, / United
 Edward Zimmernan, Executive Office of the President

Session WP1 2:30-3:00 p.m.

Rosemont A, B, / United

VISUAL SPECTACULAR

A Visual Overview of the Conference
 Moderator: T. DeFanti, University of Illinois at Chicago Circle
 Session WP2 3:00-4:30 p.m.
 Rosemont A, B / United

DOCUMENTATION AND PUBLICATION GRAPHICS

- Chair: J. Beatty, Lawrence Livermore Laboratory
 0300 The Composition and Correction of Printed Matter
 A. Pringle, University of Cambridge
 0315 Typography for Raster-Scan Displays
 P. Robinson, University of Cambridge
 0330 Computer-Designed Letters
 N. Wiseman, University of Cambridge
 0345 Newswhole
 R. Baecker, D. Tilbrook, and M. Tuori, University of Toronto
 0400 Publications Expedited by a Creator, Composer, Editor and Illustrator in One On-line Package
 J. Beatty, J. Chin and H. Moll, Livermore Laboratory

- 0415 Disp Support: An Interactive Raster-Scan Display Facility
 R. Sproull, Carnegie-Mellon University
 0430 Break
 Session WP3 3:00-6:00 p.m.
 American/Branniff

PANEL: GRAPHICS STANDARDS PLANNING COMMITTEE

Chairmen of the GSPC Subcommittees will present the revised Core Report and other subcommittee work. A question-and-answer session will follow the presentations.

Moderators:

R. Heilman, Battelle Columbus Labs

B. Herzog, University of Colorado

Panelists:

E. Sonderegger, SIGGRAPH Director (Refinements)

V. Wallace, University of Kansas (Input)

G. Chappell, TRW Systems Group (Implementation)

A. Goodrich, University of Michigan (Partitions/Protocols)

L. Hatfield, Lawrence Livermore Labs (Extensions)

Session WP4 4:45-6:00 p.m.
 Rosemont A, B

GRAPHICAL INPUT

Chair: C. Machover, Machover Associates

- 0445 Some Principles for Effective Display of Simulation Data
 A. Morse, University of Massachusetts
 0505 The Number Wheel: Interactive Three-Dimensional Positioning with a Tablet-Based Valuator
 R. Thornton, Carnegie-Mellon University
 0525 Graphical Human Interface to a Neutral Beam Source
 V. Elischer and J. Fiddler, Lawrence Berkeley Laboratory
 0545 The Semantics of Graphical Input
 E. Anson, North Andover, Massachusetts

WEDNESDAY EVENING

EXHIBITOR-SPONSORED WINE & CHEESE RECEPTION

Social Function 6:00-8:00 p.m.

Rosemont C, D

Session WP5 8:00-10:00 p.m.

Rosemont A, B

THE BEST OF THE NEW SCIENCE FILMS & VIDEOTAPES

Chair: Ken Knowlton, Bell Laboratories
 with the assistance of
 The American Science Film Association

THURSDAY MORNING

Session ThA1 9:30-12:00 noon

Rosemont A, B, / United

PANEL: VISION

An in-depth discussion on the important parameters of human visual response to computer graphic display elements and similar phenomena.

Moderator: F. Montalvo, Lawrence Berkeley Laboratory

Introduction: S. Levine, Lawrence Livermore Laboratory

Panelists:

S. Anstis, York University, Canada

R. L. Gregory, University of Bristol

B. Julesz, Bell Laboratories

THURSDAY AFTERNOON

Session ThP1 2:00-6:00 p.m.

Rosemont A, B,

ALGORITHMS AND MODELING

Chair: H. Fuchs, University of North Carolina at Chapel Hill

- 0200 An Algorithm for Shading of Regions on Vector Display Devices
K. Brassel and R. Fegeas, SUNY-Buffalo
- 0220 An Algorithmic Approach to Controlling Search in Three-Dimensional Image Data
M. Rhodes, University of California, Los Angeles
- 0240 True-Perspective Terrain Models
W. Dungan, Jr., University of Guelph
- 0300 Haloed Line Effect for Hidden Line Elimination
A. Appel, F. Rohlf, and A. Stein, Watson Research Center, IBM
- 0320 Transparency for Computer Synthesized Images
D. Kay and D. Greenberg, Cornell University
- 0340 ATOMLL: Atoms with Shading and Highlights
N. Max, Lawrence Livermore Laboratory
- 0400 Break
- 0420 A Fast Scan-Line Algorithm for Rendering Parametric Surfaces
J. Clark, New York Institute of Technology
- 0440 Predetermining Visibility Priority in 3D Scenes
H. Fuchs, Z. Kedem and B. Naylor, University of North Carolina at Chapel Hill
- 0500 ISOSRF - An Algorithm for Plotting Iso-Valued Surfaces of a Function of Three Variables
T. Wright and J. Humbrecht, National Center for Atmospheric Research
- 0520 Computer Drafting of Stones, Wood, Plants and Ground Materials
C. Yessios, Ohio State University
- 0540 Automatic Extraction of Irregular Network Digital Terrain Models from Dense Grid Digital Terrain Models
R. Fowler and J. Little, University of Columbia

Session ThP2 2:00-5:00 p.m.

United

PANEL: LARGE-SCALE APPLICATIONS OF COMPUTER CHARTING & MAPPING IN INDUSTRY

A discussion of the types of planning, justification, expense and results that are part of the implementation of new computer graphics applications with attention to overcoming corporate barriers to such implementations.

Moderator: A. Paller, Applied Urbanetics, Inc.

Panelists:

- D. Dahl, Los Alamos Scientific Laboratory
R. Dupree, Standard Oil of Indiana
W. d'Hondt, Boeing Commercial Aircraft Company

SIGGRAPH BOARD MEETING 2:00-8:00 p.m.

Continental

THURSDAY EVENING

Social Function 6:00-8:00 p.m.

International Ballroom

SPECIAL INTEREST DINNERS:

- AUTOMATION
- ANIMATION
- LSI CHIPS
- IMAGE PROCESSING
- PSYCHOPHYSICS
- DIGITAL DARKROOM

Session ThP3 8:00-10:00 p.m.

Rosemont A, B / United

ART AND ENTERTAINMENT GRAPHICS

An all-film-and-videotape show designed to dazzle
Chairs D. Sandin and T. DeFanti, University of Illinois at Chicago Circle

FRIDAY MORNING

Session FA1 9:30-11:00 a.m.

Rosemont A, B

APPLICATIONS

Chair: J. Dill, General Motors

- 0900 A Colour Display Unit for a 21-Channel EEG Monitor
R. Paternoster, L. Bousse and O. Steenhaut, Vrije Universiteit, Brussels
- 0930 Movies from Music: Visualizing Musical Compositions
J. Mitroo, N. Herman and N. Badler, University of Pennsylvania
- 1000 Interactive Color Map Displays of Domestic Information
J. Dalton, J. Billingsley, J. Quann and P. Bracken, NASA Goddard Space Center
- 1030 The Shaded Surface Display of Large Molecules
T. Porter, National Institutes of Health

Session FA2 9:30 a.m.-12:00 noon

Continental

PANEL: HUMAN INTERFACE DESIGN IN GRAPHICS SOFTWARE SYSTEMS

Moderator: T. Bruggere, Tektronix, Inc.

Panelists:

- J. D. Foley, George Washington University
J. D. Grimes, Tektronix
G. Lynch, Tektronix
T. P. Moran, Xerox Research Center
P. Reisner, IBM Research Laboratories

Session FA3 11:00 a.m.-12:00 noon

Rosemont A, B

SYSTEMS

Chair: R. Sproull, Carnegie-Mellon University

- 1100 A Network Graphical Conferencing System
M. O'Brien, RAND Corporation
- 1120 A Building Block Approach to Computer Graphics
J. Flexer and G. Wiederhold, Stanford University
- 1140 Implementation of an Interactive Computer Graphics Environment at NASA-JSC
M. Lang, R. Cohen, K. Eschenberg, J. Ochs, F. Stoker and J. Raney, Pennsylvania State University

FRIDAY AFTERNOON

Session FP1 2:00-4:00 p.m.

Rosemont A, B

ANIMATION AND RASTER GRAPHICS

Chair: J. Blinn, Jet Propulsion Laboratory

- 0200 The Efficient Generation of Smooth Line Drawings on Video Displays
H. Fuchs and J. Barros, University of North Carolina at Chapel Hill
- 0220 Smoothly Shaded Renderings of Polyhedral Objects on Raster Displays
T. Duff, New York Institute of Technology
- 0240 Tint Fill
A. Smith, New York Institute of Technology
- 0300 Softcel: An Application of Raster-Scan Graphics to Conventional Cel Animation
G. Stern, New York Institute of Technology

0320 Toward an Interactive High Visual Complexity Animation System
C. Csuri, R. Hackathorn, R. Parent, W. Carlson and M. Howard, Ohio State University

0340 Parallel Processing Techniques for Hidden Surface Removal
M. Kaplan and D. Greenberg, Cornell University

SIGGRAPH '79 sincerely thanks Dicom Corporation and MAGI Corporation for their assistance in preparing slides for authors' use.

We also greatly appreciate the support of General Electric Company Video Display Equipment Operation in providing the two Large Screen Light Valve Video Projectors.

CONCURRENT ACTIVITIES

GRAPHICS/IMAGE PROCESSING EQUIPMENT EXPOSITION

Exhibits will be on display in Hall A of the O'Hare Exposition Center (adjacent to the Hyatt Regency O'Hare) at the following times:

Tuesday, August 7	12:00 noon-8:00 p.m.
Wednesday, August 8	10:00 a.m.-6:00 p.m.
Thursday, August 9	10:00 a.m.-6:00 p.m.

Admission to the Graphics/Image Processing Equipment Exposition is free to SIGGRAPH '79 and PRIP '79 registrants. Admission to the Expo alone is \$10.

See SIGGRAPH '79 Exhibits Guide for more details.

VENDOR FORUM

The Vendor Forum, three days of vendor presentations of new product lines, will be held in Hall E of the O'Hare Exposition Center. The Vendor Forum will run concurrently with the Graphics/Image Processing Equipment Expo—at the times above.

See SIGGRAPH '79 Exhibits Guide for more details.

FILM & VIDEOTAPE RETROSPECTIVE

Rosemont C, D

20 hours of films and videotapes highlighting the past ten years of computer graphics, each hour presented by an expert in the field at the following times:

Wednesday, August 8	12:00 noon-2:00 p.m.	
	3:00 p.m.-5:00 p.m.	
Thursday, August 9	10:00 a.m.-8:00 p.m.	
Friday, August 10	10:00 a.m.-4:00 p.m.	

See SIGGRAPH '79 Film & Videotape Retrospective Guide for additional information. Tickets are available to nonregistrants at \$2.00/hour.

USER GROUP MEETINGS

Adage/AGE

Monday, August 6 8:00 a.m.-5:00 p.m. Eastern

Dicomed

Tuesday, August 7 6:00 p.m.-10:00 p.m. United A

E & S

Tuesday, August 7 1:30 p.m.-6:00 p.m. Delta

GCS

Tuesday, August 7 1:30 p.m.-6:00 p.m. Delta

ISSCO/DISSPLA

Monday, August 6 8:00 a.m.-10:00 p.m. United B

Tuesday, August 7 8:00 a.m.-5:00 p.m. United B

Vector General

Monday August 6 6:00 p.m.-10:00 p.m. Continental

SIGGRAPH '79/PRIP '79 GENERAL INFORMATION REGISTRATION

The Conference Registration Desk is located in the Lower Lobby of the Hyatt Regency O'Hare and will be open at the following times:

Sunday, August 5	5:00 p.m.-8:00 p.m.
Monday, August 6	8:00 a.m.-6:00 p.m.
Tuesday, August 7	8:00 a.m.-8:00 p.m.
Wednesday, August 8	8:00 a.m.-6:00 p.m.
Thursday, August 9	8:00 a.m.-6:00 p.m.
Friday, August 10	8:00 a.m.-12:00 noon

Name badges, meal tickets, tutorial materials and conference proceedings should be called for on arrival at the Conference Registration Desk. A message information desk will also be open at the above times adjacent to the Conference Registration Desk. The message center telephone number is 312-696-1234. (Ask for SIGGRAPH.)

A registration desk will also be open at the entrance to the O'Hare Exposition Center for the convenience of those attending the Graphics/Image Processing Equipment Exposition.

FEES

On-site registration fee for all or any part of the SIGGRAPH '79 or PRIP '79 Conference is Member \$97.50, Student \$20.00 and Nonmember \$130.00. Additional fees for cross-registration \$32.50, tutorial \$143.00 and special interest dinners \$15.50 are identified on the registration form. A late registration surcharge of 30% is included in the above fees. SIGGRAPH '79 registration entitles one to the SIGGRAPH/PRIP reception (Tuesday, August 7) and a copy of the SIGGRAPH proceedings.

PRIP '79 registration entitles one to the SIGGRAPH/PRIP reception (except student registrants) held Tuesday, August 7 and a copy of the PRIP '79 proceedings.

Cross-registration brings full privileges of SIGGRAPH '79 and PRIP '79 registration.

Special interest dinners are available to both SIGGRAPH '79 and PRIP '79 registrants upon payment of \$15.50/dinner.

Registration fees must be paid by cash or check drawn on a U.S. bank in U.S. funds and made payable to SIGGRAPH '79 or PRIP '79 as appropriate. No purchase orders or checks drawn on foreign banks will be accepted under any circumstances.

CANCELLATIONS/REFUNDS

Refund of the registration fee will be granted to those persons who cancel their registration at least 24 hours prior to the start of the program. Refunds for meals (including SIGGRAPH/PRIP reception) will not be granted unless registration cancellation is received at least 72 hours prior to the start of the program.

PARKING

2000 parking spaces are adjacent to the O'Hare Exposition Center. Parking is \$2/day. The Hyatt Regency O'Hare and the Holiday Inn O'Hare/Kennedy also maintain parking for their customers.

LODGING

Hyatt Regency O'Hare: headquarters hotel, River Road at Kennedy Expressway, Box 66456, Chicago, IL 60666, (312) 696-1234.

Holiday Inn O'Hare/Kennedy: 5440 N. River Road, Rosemont, IL 60018, (312) 671-6350. Directly across River Road from O'Hare Exposition Center, 5 minutes walk from Hyatt Regency O'Hare.

Caravelle Inn: 5440 N. River Road, Rosemont, IL 60018,
(312) 678-2525.

Windsor Inn: 6565 N. Mannheim Road, Rosemont, IL 60018,
(312) 827-6121.

O'Hare 4 Horsemen Motel: 10300 W. Higgins Road,
Rosemont, IL 60018, (312) 296-4471.

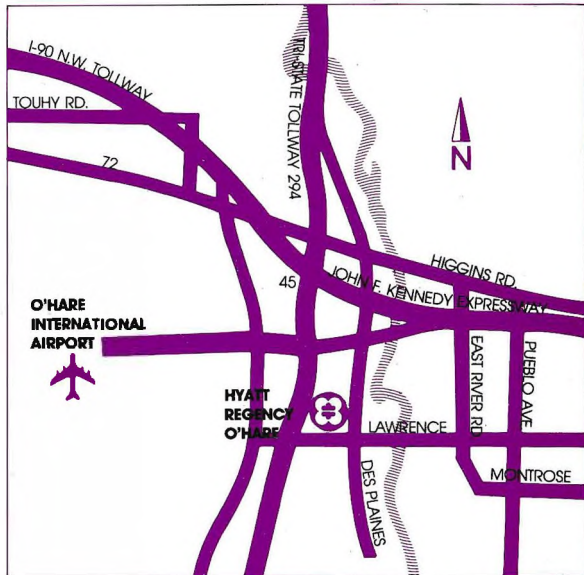
The O'Hare Inn: 6600 N. Mannheim Road,
Des Plaines, IL 60018, (312) 827-5131.

Sheraton-O'Hare Motor Hotel: 6810 N. Mannheim Road,
Rosemont, IL 60018, (312) 297-1234.

TRANSPORTATION

The Hyatt Regency O'Hare is just minutes from O'Hare International Airport (Chicago), with complimentary hotel bus service, and a half hour from downtown Chicago. Located just off the Kennedy Expressway (I-90); it's across the street from the O'Hare Exposition Center.

From O'Hare Airport: Hyatt Regency O'Hare provides complimentary limousine service every 15 minutes from O'Hare, just minutes away. Just call from the direct line phone located on the lower baggage claim level in each terminal building. **Downtown Chicago:** Kennedy Expressway West to O'Hare Field turnoff; exit at River Road South. **North:** Tri-State (294) south into the Kennedy Expressway Chicago turnoff. Exit at Cumberland North and pass over the expressway and re-enter Kennedy expressway to the O'Hare Field turnoff. Exit at River Road South. **South:** Tri-State north (294-I90) to O'Hare Field, exiting at Mannheim Road South. Pass over the expressway to enter Kennedy Expressway at the Chicago East sign. Exit at River Road South.



HYATT REGENCY O'HARE

River Road at Kennedy Expressway
P. O. Box 66456, Chicago, Illinois 60666
312-696-1234



IEEE Computer Society conference on

pattern recognition and image processing

August 6-8, 1979 Hyatt Regency Chicago O'Hare, Illinois

General Chairman

Robert M. Haralick
Virginia Polytechnic
Institute
and State University

Vice-General Chairman

Fred Billingsley
NASA Headquarters,
Washington, D.C.

Local Arrangements

Bruce H. McCormick
University of Illinois at
Chicago Circle

Registration

Miriam Holden
Argonne National
Laboratory

Treasurer

Linda Shapiro
Virginia Polytechnic
Institute
and State University

Technical Program Chairpersons

S. D. Shapiro
Stevens Institute
of Technology

R. Bajcsy
University of Pennsylvania

Technical Program Committee

L. Davis
University of Texas

O. Faugeras
Institut de Recherche
H. Freeman
Rensselaer Polytechnic
Institute

K. S. Fu
Purdue University

J. Jarvis
Bell Laboratories

F. Jellinek
IBM
T. Pavlidis
Princeton University

A. Rosenfeld
University of Maryland

A. Sawchuk
University of Southern
California

S. Tamimoto
University of Washington

Tutorial Committee

Harry Andrews
COMTAL Corporation

Robert M. Haralick
Virginia Polytechnic
Institute
and State University

K. S. Fu
Purdue University

Laveen Kanal
University of Maryland

SUNDAY MORNING

Tutorial Session 9:30 a.m.-1:00 p.m.
American/Braniff

PATTERN RECOGNITION & IMAGE PROCESSING TUTORIAL

This tutorial covers the basic concepts in computer pattern recognition and digital image processing. These fields are becoming more important in a variety of application areas such as automated industrial assembly-line production, computer-aided medical evaluation and diagnosis, earth resources and remote sensing, robotics, intelligent data gathering and processing for defense, space exploration, and law enforcement.

Instructors:

Dr. Harry C. Andrews, Vice President and Director of Advanced Plans and Programs at Comtal Corporation.

Dr. King Sun Fu, Professor of Electrical Engineering at Purdue University.

Dr. Robert M. Haralick, Professor of Electrical Engineering at Virginia Polytechnic Institute and State University.

Dr. Laveen N. Kanal, Professor of Computer Science at the University of Maryland.

Course Outline:

Topics to be included are:

- I. Statistical Pattern Recognition
Decision Rules
Feature Extraction
- II. Structural Pattern Recognition
Syntactic Methods
State-Space Methods
- III. Image Processing
Image Transforms
Image Data Compression
Image Enhancement and Restoration
Image Understanding
Hybrid Optical/Digital Processing

Text: "Tutorials and Selected Papers in Digital Image Processing." Participants who have brought 9-track 1600bpi tapes of 512x512 images of 8-bit brightness levels per pixel will be able to work with their images on a COMTAL Vision One/20 System.

SUNDAY AFTERNOON

Social Function 1:00-2:00 p.m.
Eastern/Delta

PRIP TUTORIAL LUNCHEON

Tutorial Session 2:00-6:00 p.m.
American/Braniff

PATTERN RECOGNITION & IMAGE PROCESSING TUTORIAL (continued)

MONDAY MORNING

Session MA1 9:30 a.m.-1:00 p.m.
Philippine/Air France

IMAGE PROCESSING

Chair: T. S. Huang, Purdue University

0930 Fourier Quadratic Optimization Technique for Image Reconstruction

W. G. Wee, and A. Prakash, University of Cincinnati 1

1000 Image Enhancement by Gradient Inverse Weighted Smoothing Scheme

D. C. C. Wang, A. H. Vagnucci, and C. C. Li

Montefiore Hospital, Pittsburgh, Pennsylvania 9

1030 A Dynamic Model for Image Registration

D. J. Burr, Bell Laboratories 17

1100	Break	
1130	Logarithmic Spiral Grids for Image Processing C. Weiman, Old Dominion University, G. Chaikin, New York University Medical Center	25
1200	Adaptive Image Filtering C. H. Chen, Southern Massachusetts University	32

Session MA2 9:30 a.m.-1:00 p.m.
Air Canada

PATTERN RECOGNITION THEORY

0930	A Combined Nonparametric Approach to Future Selection and Binary Decision Tree Design E. M. Rounds, Technology Service Corp.	38
1000	Statistical Properties of Error Estimators in Performance Assessment of Recognition Systems J. Kittler, and P. Devijver, Oxford University, England 44	
1030	Learning with Imperfectly Labeled Patterns C. B. Chittineni, Lockheed Corp.	52
1100	Break	
1130	An Algorithm for Determining Identity of Nearest-Neighbor and Potential Function Decision Rules S. N. Srinari, T. Snabb, and L. T. White, SUNY Buffalo	63
1200	Design of Composite Classifier Systems in Imperfectly Supervised Environments B. V. Dasarathy, M&S Computing, Inc., B.V. Sheela, ISRO Satellite Center, India	71
1230	A Discriminant Analysis Procedure for Paired Variables M. Cox and C. F. Lam, Medical University of South Carolina	79

Session MA3 9:30 a.m.-1:00 p.m.
Swiss Air/Olympic

INDUSTRIAL APPLICATIONS

Chair: J. Jarvis, Bell Laboratories		
0900	Estimation of Internal Machine Part Clearances by Digital Processing of Industrial Radiographs Using a Profile Analysis Technique D. L. Davies, B. J. McCartin, and P. H. Smith, Pratty & Whitney Aircraft Group	53
1000	Automatic Visual Inspection of Blind Holes in Metal Surfaces G. B. Porter, T. M. Cipolla, and J. L. Mundy, General Electric	83
1030	Automatic Optical Identification of Faults in Bubble Memory Overlay Patterns C. A. Klein and K. J. Breeding, Ohio State University	87
1100	Break	
1130	Automatic Non-Reference Inspection of Printed Wiring Boards W. Sterling, Xerox, Palo Alto	93
1200	A Method for Automatic IC Chip Alignment and Wire Bonding Y. Y. Hsieh and K. S. Fu, Purdue University	101
1230	A Fast Defect Measurement Algorithm and Its Array Processor Mechanization O. Firschein and W. Eppler, Lockheed Research, M. A. Fischer, SRI International	109

MONDAY AFTERNOON

Session MP1 2:30-6:00 p.m.
Philippine/Air France

EDGE PROCESSING

Chair: H. Freeman, Rensselaer Polytechnic Institute		
0230	Segmentation of Solid Objects Using Global and Local Edge Coincidence	

0255	J. J. Hwang, C. C. Lee and E. L. Hall, University of Tennessee Implementation, Interpretation, and Analysis of a Suboptimal Boundary Finding Algorithm H. Elliott, D. B. Cooper and P. Symosek, Colorado State University	114 122
0320	An Iterative Generalization of the Sobel Edge Detection Operator A. Iannino and S. D. Shapiro, Stevens Institute of Technology	130
0345	Evaluation of Edge Operators Using Relative and Absolute Grading D. J. Bryant and D. W. Bouldin, University of Tennessee	138
0410	Break	
0425	On Improving Line Detection in Noisy Images G. S. Zabele and J. Koplowitz, Clarkson College	146
0450	Edge Extraction of Radar and Optical Images R. Y. Wong and E. L. Hall, California State Polytechnic University	150
0515	Edge Smoothing A. Salehi and T. S. Huang, Purdue University	154
0540	An Optimal Three-Dimensional Edge Operator S. W. Zucker and R. A. Hummel, McGill University, Canada	162

Session MP2 2:30-6:30 p.m.
Air Canada

STRUCTURAL PATTERN RECOGNITION AND CLUSTERING

Chair: S. D. Shapiro, Stevens Institute of Technology		
0230	Ln Norm Optimal Histogram Matching S. K. Chang and Y. W. Wong, University of Illinois—Chicago Circle	169
0300	Where Do I Look Now?: Modeling and Inferring Object Locations by Constraints D. Russell, University of Rochester	175
0330	An Effective Algorithm for String Correction Using a Generalized Distance R. L. Kashyap and B. J. Oommen, Purdue University	184
0400	Break	
0430	Self-Learning Pattern Classification Using a Sequential Clustering Technique R. L. DeMantaras and J. Aguilar-Martin, University of California—Berkeley	192
0500	Pattern Recognition and Problem Solving R. B. Banerji, Temple University	202
0530	Graphics Techniques for the Evaluation of Clustering Algorithms W. E. Wright, Southern Illinois University	206

Session MP3 2:30-6:00 p.m.
Swiss Air/Olympic

APPLIED IMAGERY PATTERN RECOGNITION

Chair: R. Nagel, National Bureau of Standards		
0230	An SIMD/MIMD Multimicroprocessor System for Image Processing and Pattern Recognition H. J. Siegel, L. J. Siegel, R. J. McMillen, P. T. Mueller, Jr. and S. D. Smith, Purdue University	214
0255	An Application of Pattern Recognition to an Astronomical Data Reduction Problem J. F. Jarvis and J. A. Tyson, Bell Laboratories	225
0320	A Direct Two-Dimensional FFT with Applications in Image Processing D. F. Naccarato and Y. T. Chien, University of Connecticut	233

0345	Covering and Indexing an Image Subset S. L. Tanimoto, University of Washington	239
0410	Break	
0425	Satellite Pattern Classification Using Charge Transfer Devices W. E. Snyder, C. Husson and H. F. Benz, North Carolina State University	246
0450	The Base 8 Binary Array Processor A. P. Reeves and R. Rindfuss, Purdue University	250
0515	Implementation of Computation-Intensive Reconstruction Algorithms for X-Ray Computed Tomography B. Gilbert, L. D. Harris, R. D. Beistad, R. A. Robb and D. E. Atkins, Mayo Clinic, Rochester, MN	256
0540	Software Concepts Useful for Industrial Image Processing P. Smith, B. McCartin, D. Davies, Pratt and Whitney Aircraft Group	

MONDAY EVENING

Social Function 7:00-9:00 p.m.
Diplomat/Viscount

PRIP COCKTAIL RECEPTION

TUESDAY MORNING

Session TA1 9:30 a.m.-1:00 p.m.
Philippine/Air France

CURVE AND SHAPE DESCRIPTION

Chair: T. Pavlidis, Princeton University		
0930	Skeletons for Sequential Boundary Data B. A. Shapiro, J. Pisa and J. Sklansky, National Institutes of Health	265
1000	A Technique for Comparing Curves D. J. Burr, Bell Laboratories	271
1030	Strip Trees: A Hierarchical Representation for Map Features D. H. Ballard, University of Rochester	278
1100	Break	
1130	Three-Dimensional Shape Analysis Using Local Shape Descriptors T. P. Wallace, O. R. Mitchell and K. Fukunaga, Purdue University	292
1230	Global Shape Decomposition Using the K-Syntactic Similarity Approach C. Bjorklund and T. Pavlidis, Princeton University	

Session TA2 9:30 a.m.-1:00 p.m.
Swiss Air/Olympic

SCENE ANALYSIS

Chair: A. Guzman, Universidad Nacional Autonoma de Mexico		
0930	Experiments in Dynamic Segmentation C. G. Pieroni, University of Lausanne, Switzerland	300
1000	A Simulated Associative Memory for Storing Structural Descriptions of Pictures P. Bonzon and T. Van Nam, University of Lausanne	308
1030	Regionization of Image Data Using Surface Approximation S. Hsu and J. L. Mundy, General Electric	314
1100	Break	
1130	Scene Labeling: An Optimization Approach O. Faugeras and M. Berthod, Institut de Recherche, France	318
1200	Object Recognition by Three-Dimensional Moment Invariants F. A. Sadjadi and E. L. Hall, University of Tennessee	327

1230	A New Probabilistic Relaxation Scheme. S. Peleg, University of Maryland	337
------	--	-----

Session TA3 9:30 a.m.-1:00 p.m.
Air Canada

MEDICAL APPLICATIONS I

(Co-Sponsored by Pattern Recognition Society)		
Chair: R. Ledley, Georgetown University Medical Center		
0930	Object Location in Computed Tomography Images Using Global Local Segmentation E. L. Hall and J. J. Hwang, University of Tennessee	344
1000	Problems Associated with Processing Large Numbers of Chest Radiographs J. L. Hankinson and J. E. Stewart	353
1030	Image Processing in Computer Radiography R. Heeschen, R. Joseph, F. DiBianca and G. Cohen, General Electric	356
1100	Break	
1130	Automatic Radiographic Feature Enhancement R. S. Ledley, C. M. Park, Y. G. Kulkarni, and R. A. Duffy, Georgetown University Medical Center	363
1200	Functional Imaging: Applications in Three Radiological Modalities J. E. Holden, University of Wisconsin	368
1230	An Algorithm for Volume Estimation from Digitized Images L. Cook, P. Cook, K. R. Lee, S. Batnitzky, S. Fritz, J. Ophir, S. J. Dwyer III, A. W. Templeton, University of Kansas Medical Center	

TUESDAY AFTERNOON

Session TP1 2:30-6:00 p.m.
Philippine/Air France

TEXTURE AND MATHEMATICAL FOUNDATIONS

Chair: D. Fangeras, Institut de Recherche		
0230	Stochastic Texture Fields Synthesis from A Priori Given Second Order Statistics A. Gagalowicz, Institut de Recherche, France	376
0300	Towards a Set of Statistical Features Which Measure Visually Perceivable Qualities of Textures R. W. Conners, Louisiana State University	382
0330	Multilevel Array Grammars for Generating Texture Scenes S. N. Jayaramurthy, University of Iowa	391
0400	Break	
0430	Feature Extraction for Texture Discrimination H. Wechsler, University of Wisconsin	399
0500	Skeletons in Pattern Recognition Categories M. Pavel, University of Paris, France	404
0530	A Group Theoretic Approach to Invariance in Pattern Recognition T. G. Newman, Texas Tech University	407

Session TP2 2:30-6:00 p.m.
Swiss Air/Olympia

TWO-DIMENSIONAL AND THREE-DIMENSIONAL SHAPE DESCRIPTION AND MATCHING

Chair: L. Shapiro, Virginia Polytechnic Institute and State University		
0230	Structural Shape Description and Matching L. G. Shapiro, Virginia Polytechnic Institute and State University	413
0300	Generalized Cylinders from Parallel Slices B. Sroka, University of Kansas	421
0330	How to Describe Pure Form and How to Measure Differences in Shape Using Shape Numbers	

- E. Bribiesca and A. Guzman, Universidad Nacional
Autonoma de Mexico 427
- 0400 Break
- 0430 Use of Incremental Curvature for Describing and
Analyzing Two-Dimensional Shape
H. Freeman, Rensselaer Polytechnic Institute 437
- 0500 Global Shape Decomposition Using the K-Syntactic
Similarity Approach
C. M. Bjorklund and T. Pavlidis, Princeton University 445
- 0530 Shape Recognition Using Hierarchical Constraint
Analysis
T. Henderson & L. Davis, University of Texas at Austin

Session TP3 2:30-6:00 p.m.

Air Canada

MEDICAL APPLICATIONS II

Chair: J. Sklansky, University of California, Irvine

- 0230 An Approach to Computer Processing of Lung Tissue
Micrographs
J. T. Tou and H. H. Liu, University of Florida 453
- 0300 Metaphase Finding Using Microprocessors
J. Van Daele, F. Dom, L. DeBuyscher, A. Oosterlink
and H. Van Den Berghe, University of Leuven, Belgium 460
- 0330 An Application of Fuzzy Subset Theory to the
Classification of Human Chromosomes
L. Vanderbilt, I. A. Oosterlink and H. Van Den Berghe,
University of Leuven, Belgium 466
- 0400 Break
- 0430 Analysis of Images of Colonies of Tissue Culture Cells
and Microorganisms
J. L. Couch, M. W. Konrad and D. Glaser, University of
California, Berkeley 473
- 0500 A Segmentation Approach for Pap Smear Inspection
K. S. Fu and Y. K. Lin, Purdue University 479
- 0530 Toward Computed Detection of Nodules in Chest
Radiographs
J. Sklansky, P. Sankar, M. Katz, F. Towfig, D. Hassner,
A. Cohen and W. Root, University of California, Irvine 484

TUESDAY EVENING

Social Function 8:00-10:00 p.m.

Rosemont Ballroom

SIGGRAPH/PRIP CONFERENCE RECEPTION

WEDNESDAY MORNING

Session WA1 9:30 a.m.-1:00 p.m.

Philippine/ Air France

PANEL: TRANSPORTABLE IMAGE PROCESSING SOFTWARE

Chair: A. Rosenfeld, University of Maryland

Panelists:

- B. Barnes, National Science Foundation
H. Freeman, Rensselaer Polytechnic Institute
D. Hamlet, University of Maryland
R. M. Haralick, Virginia Polytechnic Institute
and State University

Session WA2 9:30 a.m.-1:00 p.m.

Swiss Air/Olympic

SCENE SEGMENTATION AND INTERPRETATION

Chair: R. M. Haralick, Virginia Polytechnic Institute and State
University

- 0930 A Facet Model for Image Data
R. M. Haralick and L. Watson, Virginia Polytechnic
Institute and State University 489

- 1000 A Noise Reducing Preprocessing Algorithm
K. J. Overton and T. E. Weymouth, University of
Massachusetts, Amherst 498
- 1030 Texture Image Segmentation Using Local Extrema
O. R. Mitchell, S. P. Lutton and S-P. Su, Purdue University 508
- 1100 Break
- 1130 Segmentation
K. E. Price, University of Southern California,
Los Angeles 512
- 1200 Segmentation, Evaluation, and Natural Scenes
P. Nagin, R. Kohler, A. Hanson and E. Riseman,
University of Massachusetts, Amherst 515
- 1230 A Modular Computer Vision System for Picture
Segmentation and Interpretation
M. D. Levine and S. I. Shaheen, McGill University 523

Session WA3 9:30 a.m.-12:10 p.m.

Rosemont A/B

SIGGRAPH/PRIP SESSION

(Co-Sponsored by SIGGRAPH)

Co-Chairs: R. Bajcsy, University of Pennsylvania

- B. Pollack, University of British Columbia
- 0930 Raster Image File Format (RIFF): An Approach to
Problems in Image Management
P. G. Selfridge and K. R. Sloan, Jr., University of
Rochester 540
- 0950 An Understanding of Moire Patterns in the
Reproduction of Half-tone Images
A. Steinbach and K. Wong, IBM 545
- 1010 Generation of 3D Surface Descriptions from Images of
Pattern Illuminated Objects
R. Potmesil, Rensselaer Polytechnic Institute 553
- 1030 Tutorial on Compensation Tables
E. Catmull, New York Institute of Technology
- 1050 Break
- 1110 Simple Animation by Changing Color Definitions
R. Shoup, Xerox Palo Alto Research Center
- 1130 An Improved Illumination Model for Shaded Displays
T. Whitted, Bell Laboratories
- 1150 Some Raster Graphics Extensions to the Core System
J. Foley, J. Templeton and D. Dasyar,
George Washington University

WEDNESDAY AFTERNOON

Session WP1 2:30-6:00 p.m.

Philippine/ Air France

PANEL: IMAGE UNDERSTANDING: PRIP OR AI?

Panel Organizer: K. S. Fu, Purdue University

Moderator: L. Druffel, Defense Advanced Research
Projects Agency

Panelists: R. K. Aggarwal, Honeywell

- E. Barrett, National Science Foundation
R. M. Haralick, Virginia Polytechnic Institute
and State University
L. N. Kanal, University of Maryland
R. Reddy, Carnegie-Mellon University
A. Rosenfeld, University of Maryland

Session WP2 2:30-6:00 p.m.

Air Canada

IMAGE CODING AND CURVE APPROXIMATION

Chair: S. Shanmugam, Bell Laboratories

- 0230 Motion Compensated Transform Coding
A. N. Netravali and J. Stuller, Bell Laboratories 561

0255	DCT/DPCM Processing of NTSC Composite Video Signal A. Polysongsang and K. R. Rao, University of Texas	568
0320	Use of the Hough Transform for Image Data Compression S. D. Shapiro, Stevens Institute of Technology	576
0345	Adaptive Image Data Compression O. A. Zuniga and R. M. Haralick, Virginia Polytechnic Institute and State University	583
0410	Break	
0440	Finding a Good Figure that Approximately Passes Through Given Points J. R. Stagle and J. K. Dixon, Naval Research Laboratory	591
0505	Applications of a Simple Statistical Model for Curves T. Pavlidis and D. J. Sakrison, Princeton University	599
0530	Fast Polygonal Approximation of Digitized Curves J. Sklansky and Gonzalez, University of California, Irvine	604

Session WP3 2:30-6:00 p.m.

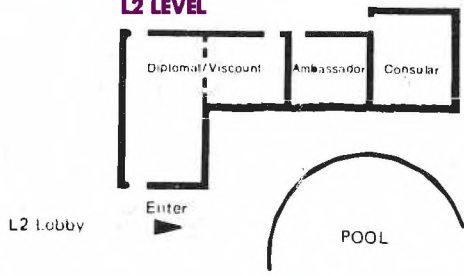
Swiss Air/Olympic

REMOTE SENSING AND TIME-VARYING IMAGERY

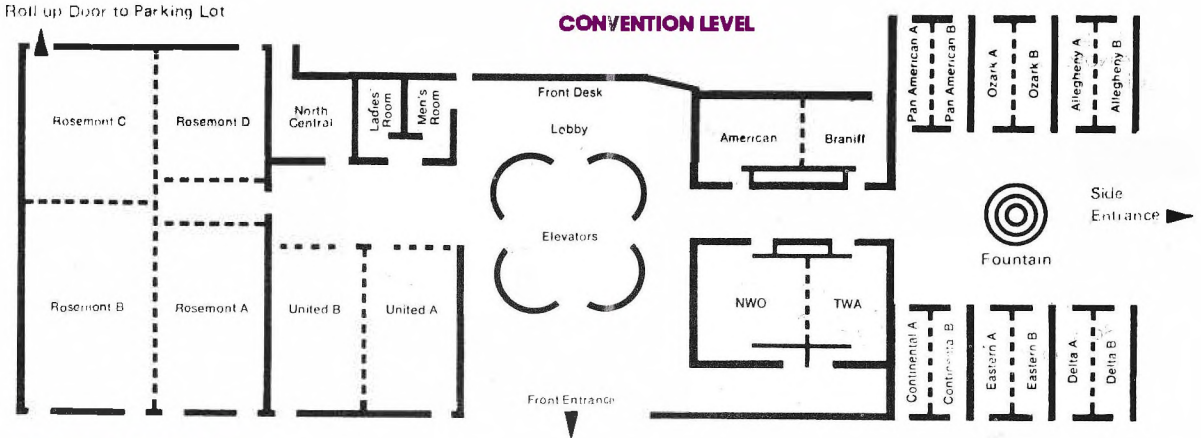
Chair: F. Billingsley, NASA Headquarters, Washington, D.C.

0230	Map-Guided Interpretation of Remotely Sensed Imagery J. Tanenbaum, H. G. Barrow, R. C. Bolles, M. A. Fischler, and H. C. Wolf, SRI International	610
0300	Some Recent Developments in Texture Analysis A. Rosenfeld, University of Maryland	681
0330	Adaptive Remote Sensing Technology for Feature Recognition and Tracking R. G. Wilson, W. E. Silverston, Jr. and G. F. Bullock, Langley Research Center	623
0400	Break	
0430	A Motion Directed Picture Segmentation System to Support Network Graphics Applications A. I. Karshmer, New Mexico State University	630
0500	A Syntactic Approach to Time-Varying Image Analysis T. I. Fan and K. S. Fu, Purdue University	638
0530	Visual Motion Perception by Intelligent Systems W. Scacchi, University of California, Irvine	646

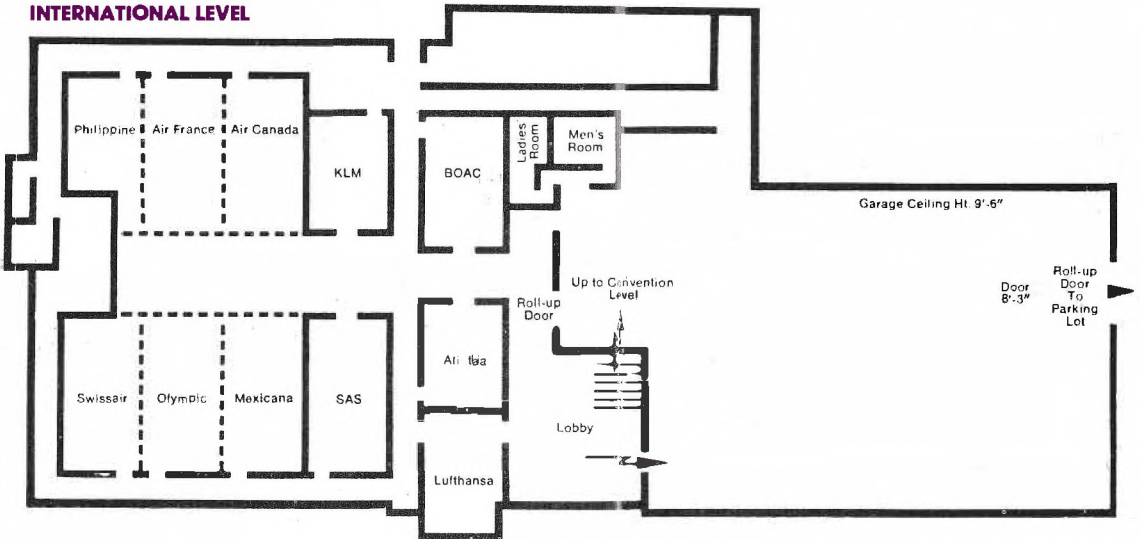
L2 LEVEL



CONVENTION LEVEL



INTERNATIONAL LEVEL



**HYATT REGENCY O'HARE
FLOOR PLAN OF MEETING FACILITIES**