

# THE PIONEERS RETURN TO DALLAS

## SIGGRAPH 1990



FILM AND VIDEO THEATER



**SIGGRAPH '90 Conference  
Co-Chairs**

David D. Loendorf  
L & S Computer Technology, Inc.

Jacqueline M. Wollner  
Convex Computer Corporation

**Film and Video Theater Chair**

Dave English  
Walt Disney Pictures

**Creative Director**

John Grower  
Santa Barbara Studios

**Jury Members**

Wayne Carlson  
Ohio State University

Rob Cook  
Light Source Computer Images, Inc.

Doris Kochanek  
National Film Board of Canada

John Lasseter  
Pixar

Frank Thomas  
Animator

Chris Wedge  
Blue Sky Productions

**Committee Members**

Janet Doran-Veevers  
Santa Barbara International Film Festival

Scott Johnston  
Walt Disney Pictures

Richard Weinberg  
University of Southern California

Dave Wolf  
Walt Disney Pictures

**Staff**

Rozanne M. Cazian  
Production Manager

MaryAnn McLeod  
Administrative Assistant

Gina La Verde  
Senior Secretary

**Special Thanks**

Walt Disney Pictures

Hugh Dubberly  
Apple Computer, Inc. and  
Art Center College of Design

Thom Marchionna  
Apple Computer, Inc.

Leona Caffey  
Kathleen Nilles  
Public Relations  
Smith Bucklin & Associates



# WELCOME!

Welcome to the SIGGRAPH '90 Film and Video Theater

SIGGRAPH screenings of film and video began over 10 years ago as a small group of animation and graphics enthusiasts huddled around a VTR and monitor sharing their latest work. Evening shows became part of the conference after several years and just a few years ago, Animation Screenings were added to increase the opportunity for all of us to share an expanded scope of material. Today, the evening show has evolved into the tradition of the Film and Video Theater—the international premier showcase for computer animation and graphics. The Animation Screenings are presented on a daily basis in their own theater, as well as in a 'cafe' area with VCR and monitor for a more casual atmosphere. This year we are pleased to institute the 'Open Deck' to allow those with work that wasn't completed by the jury deadline to show their latest creative efforts to small groups and to keep that original spirit of sharing at SIGGRAPH alive and well!

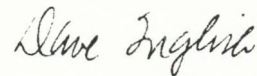
I believe it's important as we grow that we don't lose sight of our beginnings, and while the venue may change, our goal of sharing the very best work by creative people from all areas of interest must be maintained and enhanced. Our role and direction this year has been to emphasize the possibilities that exist to submit an entry to SIGGRAPH; to encourage those internationally with a variety of computer resources to get involved and become part of the program!

The contents of this catalog represent those entries for the Film and Video Theater and Animation Screenings that were chosen by a jury of recognized leaders in the animation and graphics community. From a total of 264 entries, with a running time of over 12 hours; 56 entries (representing 44 contributors) have been selected for the evening show, which is planned to last about two hours. A group of 69 entries will be shown in multiple Animation Screenings with a total running time of about three hours. The material is truly international in content, and includes

entries from individuals with modest computer systems as well as from multi-million dollar facilities. The factors in common are technical excellence, innovation and audience impact!

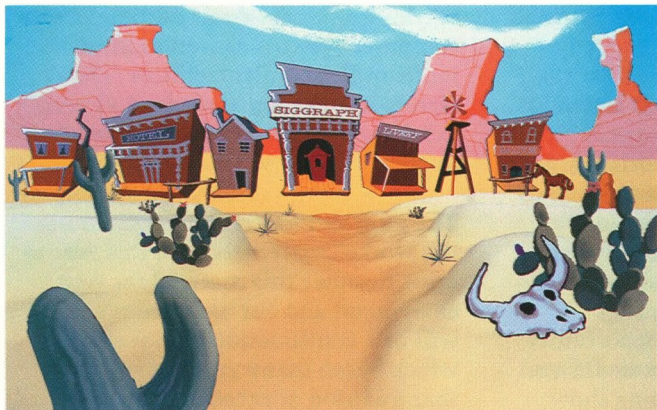
The Film and Video Theater Committee has worked extremely hard this year to bring together this material for your enjoyment, and our ultimate reward will be a continuation of that sharing which began many years ago—that tradition of excellence and entertainment experience unequalled anywhere! I'm grateful for the dedication of the members of the committee and especially the ever-present support of the Conference Co-Chairs. A special thank you to Rozanne Cazian, John Grower, and MaryAnn McLeod for their diligent effort and assistance, without which, none of this would have been possible.

We hope you enjoy the show!



Dave English  
Film and Video Theater Chair  
Walt Disney Pictures

# FILM AND VIDEO THEATER



## Opening and Closing Animation

### *Produced by:*

John Grower

### *Director:*

Eric Guaglione

### *Creative Director:*

Michael Cedeno

### *Art Director:*

Bruce Jones

### *Music:*

Jay Ferguson

### *Voice:*

Peter Gullerud

### *Production Company:*

3D Magic

### *Animators:*

Dave Altenau, Freddi Gitelman, Eric Guaglione, Jim Hourihan, Kevin Hout, Scott Liedka, Ted Malone, Ron Moreland, and Jeff Wood

### *Character Modeling:*

Kleiser-Walczak Co.

### *Film Recording:*

Gemini Process (A Post Group/Pacific Title Venture)

### *Software Support:*

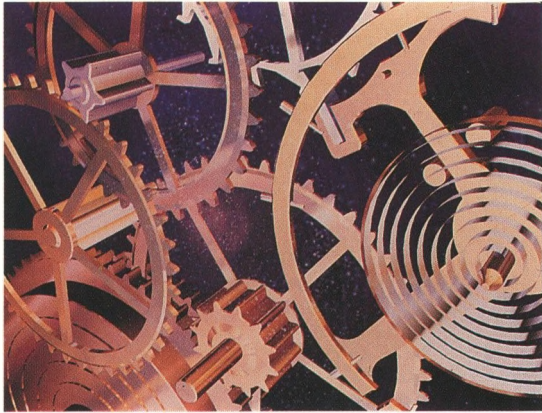
Wavefront Technologies

### *Hardware Support:*

Visual Computing Group,  
Numonics Corp.,  
and Silicon Graphics Computer Systems

### *Special Thanks:*

Howard Baker, Geoff Casburn, Kevin Lombardi, Paul Murphy, and Jeff Yates



### **ABC's World of Discovery**

The imagery of nature, science, exploration, engineering and cultural history is captured in this sweeping montage.

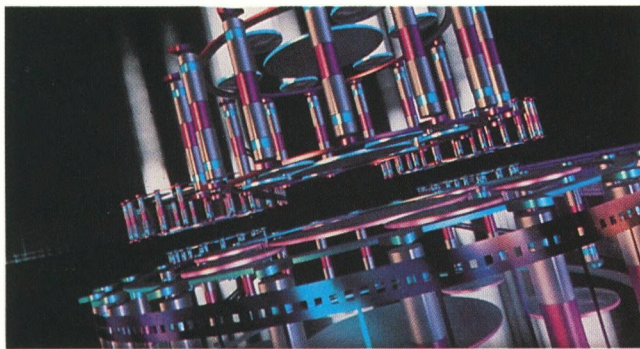
Metrolight Studios  
Los Angeles, California



### **The Audition**

Facial expression tracking, dynamic simulation and ray-tracing radiosity are used to tell about what happened one day at the circus.

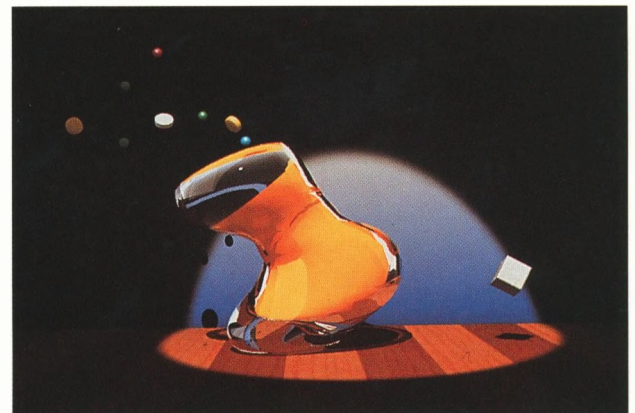
Apple Computer, Inc.  
Advanced Technology Group  
Cupertino, California



### **AMC "Feature Presentation"**

High quality, computer animated trailers demonstrate the advanced sight and sound technology of AMC's High Impact Theatre System.

Metrolight Studios  
Los Angeles, California

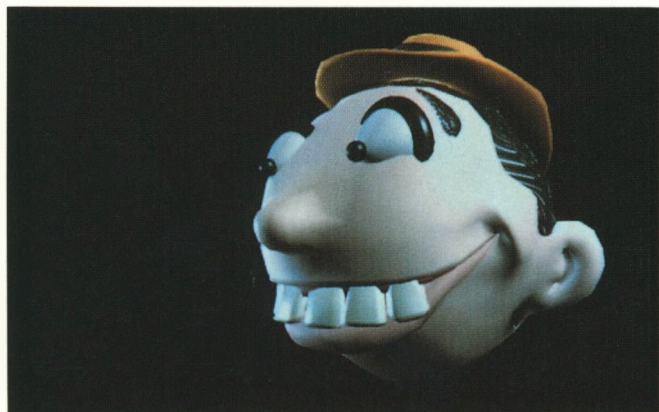


### **Blue Sky Productions Demonstration Reel**

Glass vessels "morph" and cavort in two of Blue Sky's recent commercial productions.

Blue Sky Productions, Inc.  
Ossining, New York

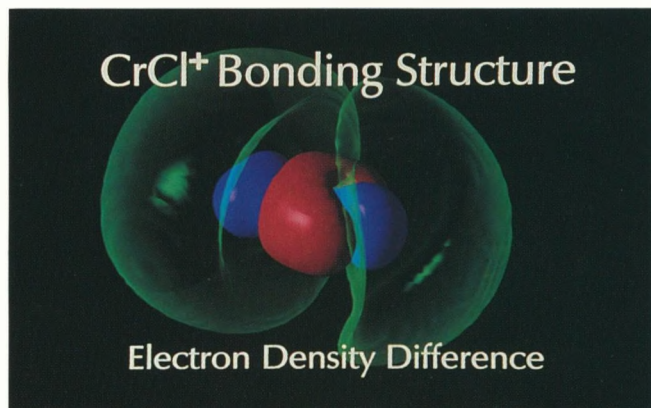




### **BONEHEAD in "Why Do You Think They Call Him Dope"**

Focusing on humanity's eternal quest for the perfect beat, this epic 1-minute saga was produced for Delicious Vinyl, a dope ("the greatest") HipHop record label.

Peter Conn  
Homer & Associates, Inc.  
Hollywood, California



### **Computational Quantum Chemistry in Catalysis Research**

Examples of visualizations of various catalyses involving chromium chloride, magnesium oxide and faujasite clusters.

National Center for Supercomputing Applications  
Visualization Services and Development  
Champaign, Illinois



### **California State Lottery — "Decco"**

Playing Decco, a woman hallucinates that she's in Cardland. Will she choose Sammy, the desperate Five of Spades? Will he handle rejection?

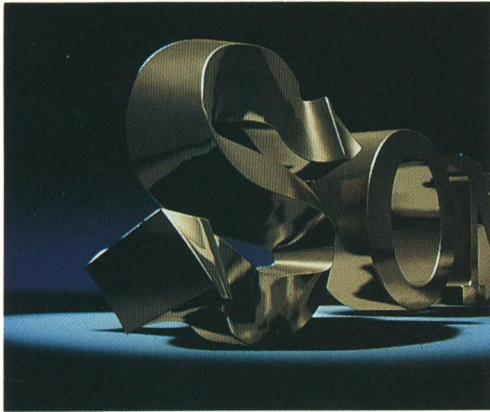
Pixar Animation Production Group  
with Colossal Pictures  
San Rafael, California



### **Cuisine Art**

A mischievous baby squash takes a whimsical tour through the art museum.

Leoung O'Young  
Toronto, Ontario, Canada



### Dancing Sony

The capability of Polygon Pictures' Skelton Coordinate System is demonstrated in its first commercial application.

Polygon Pictures  
Tokyo, Japan



### Droomfabriek (Dream Factory)

Morphosis uses computer graphics to build a dream factory.

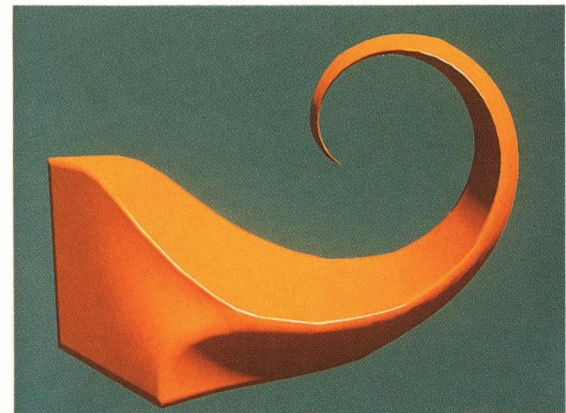
Jeroen Buys  
Morphosis  
The Netherlands



### Dirty Power

This "power-ful" animation was inspired by the artist's exploration of the oftentimes seductive nature of 3D computer graphics.

Robert Lurye  
College Station, Texas



### Ductile Flow

Flow patterns are created by iterating non-linear spatial transformations. Polyhedral objects placed in the space follow the flow. Sufficient ductility is provided by adaptive, stochastic subdivision.

Craig Reynolds  
Symbolics, Inc.  
Los Angeles, California

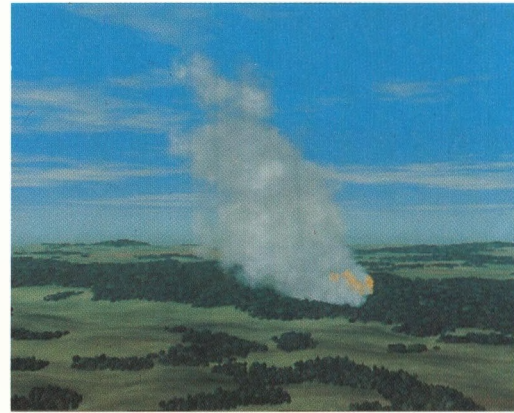




### Entropy

This artful animation, inspired by the Hopi Indian story of creation, explores Darwin's theory of evolution and the issue of entropy.

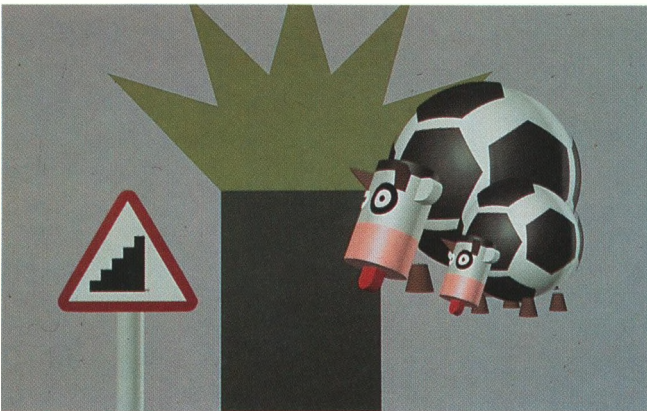
Robin Noorda  
Morphosis  
The Netherlands



### Forest Fire Simulation

This realistic visualization of a forest fire is modeled with textured quadric surfaces.

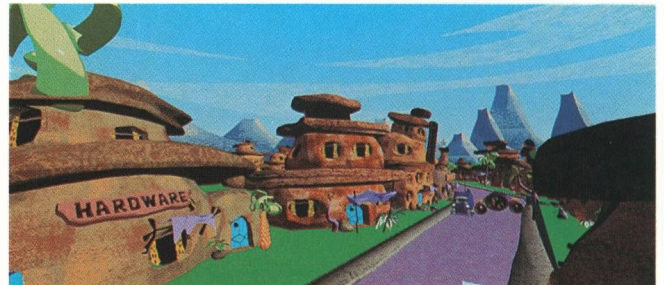
Geoffrey Gardner  
Grumman Data Systems  
Woodbury, New York



### Fables Géométriques "La Laitière et le Pot au Lait"

La Fontaine's beloved fable of "The Milkmaid and the Jug of Milk" is animated as part of the T.V. series, "Geometric Tales".

Fantome Animation  
Paris, France

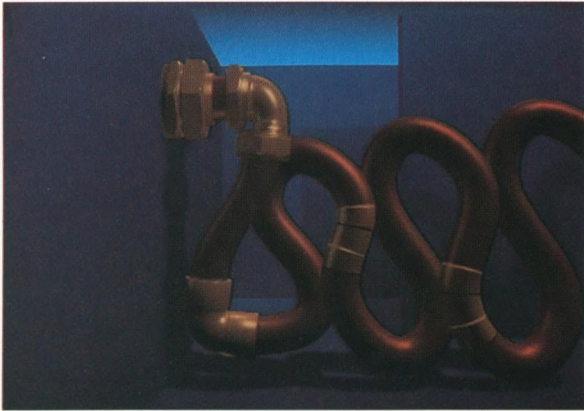


### The Funtastic World of Hanna-Barbera

The Flintstones meet the Jetsons in this wild flight simulator ride at Universal Studios in Orlando.

deGraf/Wahrman, Inc.  
West Hollywood, California

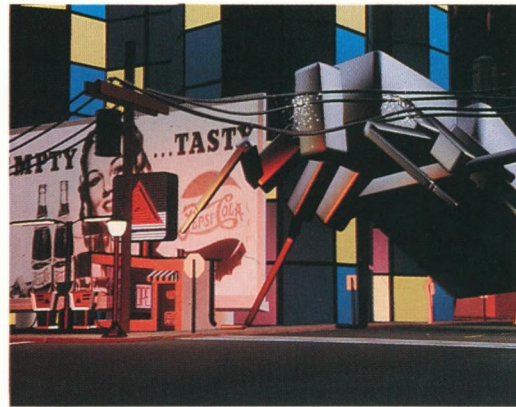




### Gas Pipe

The trials and tribulations of a gas pipe.

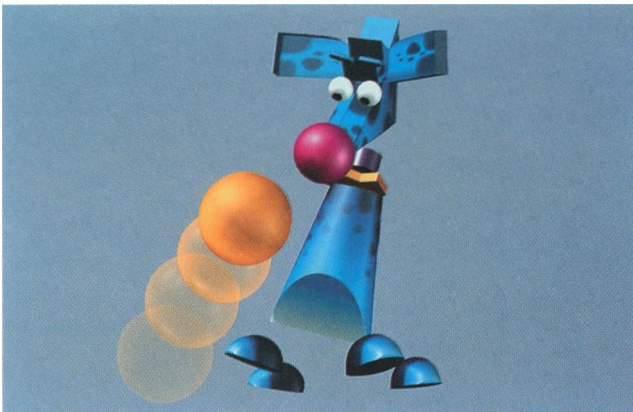
SVC Television for  
Robinson Lambie-Nairn  
London, England



### Grinning Evil Death

A blood-spattered tale of modern-day pest control utilizing 2D animation and 3D graphics.

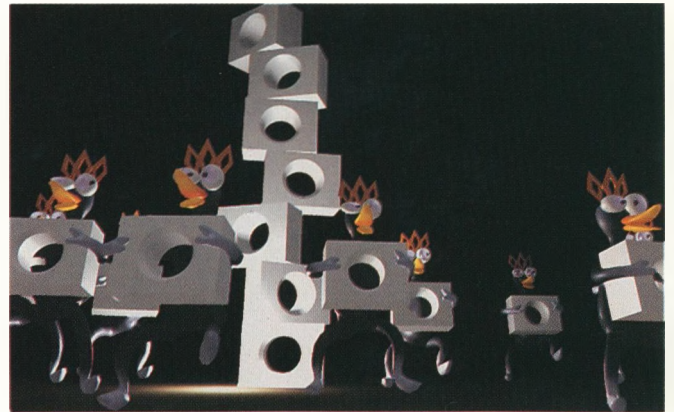
Mike McKenna  
Bob Sabiston  
Cambridge, Massachusetts



### The Great "Blue Ouah Ouah"

This loveable character will win his way into your heart.

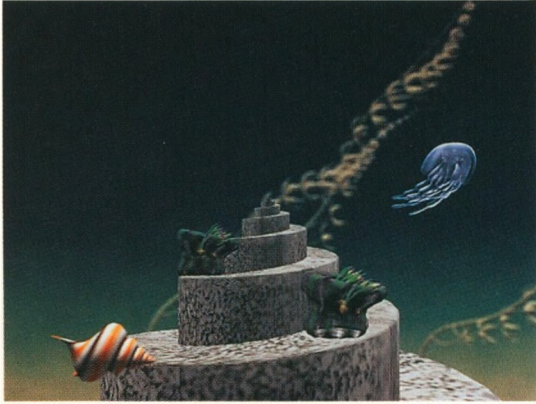
Fantome Animation  
Paris, France



### The Hole

The quirky black birds in this artist's first original work are the hole-block builders.

Motonori Sakakibara  
Namco Ltd.  
Yokohama, Japan



### **I Have Never Seen, But I Know...**

All of the creatures and plants in this graceful underwater fantasy were generated and animated by De Leon's Branching Object Generation and Animation System.

Midori Kitagawa De Leon  
Texas A & M University  
College Station, Texas



### **In Search of Muscular Axis**

Polygon Pictures demonstrates their new Skelton Coordinate System which can provide complete mechanism to all types of motion and deformation.

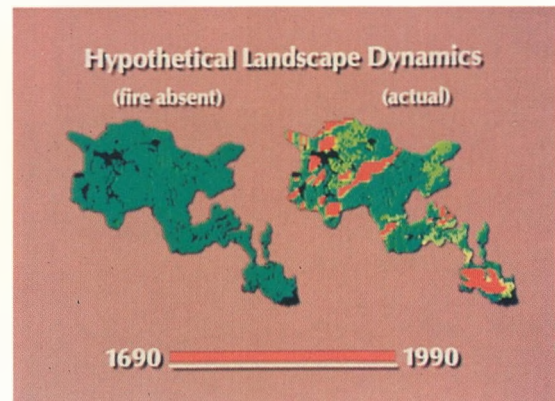
Polygon Pictures  
Tokyo, Japan



### **ILM Computer Graphics SIGGRAPH '90 Demo Reel**

A demonstration of computer graphics and special effects produced for recent theatric-release motion pictures and commercials.

Industrial Light & Magic  
San Rafael, California



### **Landscape Dynamics of Yellowstone Park**

The historical impact of fire on landscape diversity in Yellowstone Park is demonstrated with graphs from 1690 to 1990.

National Center for Supercomputing Applications  
Visualization Services & Development  
Champaign, Illinois





### Lava Jr.

John Lasseter's classic film inspires new interpretations.

Randy Bauer  
Austin, Texas



### Masterplan

Commercial work produced by Morphosis b.v.

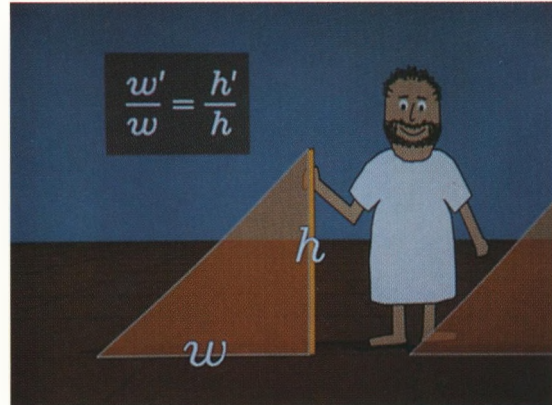
Jeroen Buys  
Morphosis  
The Netherlands



### Life Savers Holes —“Babies”

Are 61 characters made of candy and eight pieces of playground equipment too much for a 30-second spot?

Pixar Animation Production Group  
with Colossal Pictures  
San Rafael, California



### Mathematics! Similarity and the Story of $\pi$

Excerpts from several modules of the Mathematics! Project—a series of videotapes to aid in teaching high school mathematics.

Jim Blinn  
Project Mathematics  
California Institute of Technology  
Pasadena, California



### McDonald's - "Save the Universe"

If all the people in the world came into one McDonald's at the same time, would the earth tilt off its axis wreaking havoc on the universe?

Metrolight Studios/Boss Films  
Los Angeles, California



### The Nature

Excerpts from this work produced for Osaka's EXPO '90 dramatically combine live action and computer graphics animation.

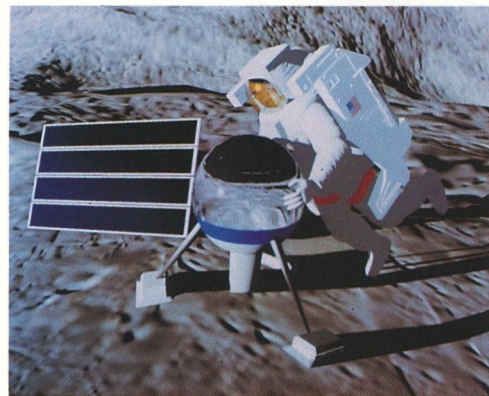
Dentsu Inc./Tokyu Agency Inc.  
Tokyo, Japan



### More Bells and Whistles

This data-driven animation of an orchestra uses a MIDI (Musical Instrument Digital Interface) control stream. Software was developed to automate the synchronization of instrument motion based on musical events.

Wayne Lytle  
Cornell National Supercomputer Facility  
Ithaca, New York



### The Next Giant Leap

Excerpts from NASA's manned Lunar/Mars Mission Studies.

NASA/Johnson Space Center  
Visual Communications Lab  
Houston, Texas

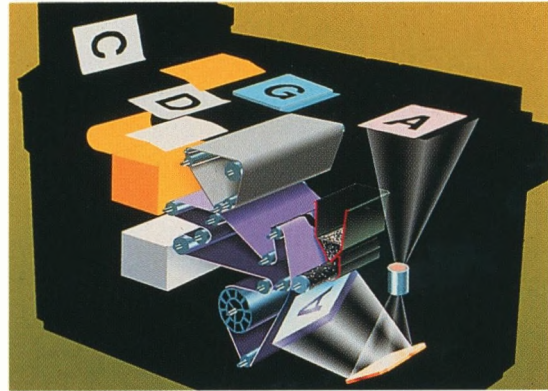




### 1990 SIGGRAPH Demo Reel

Recent commercial work is highlighted.

Lamb & Company, Inc.  
Minneapolis, Minnesota



### Océ Copy Simulation

An animation that explains how the paper track inside the Océ copier works.

Adriaan Lokman  
Morphosis  
The Netherlands



### Nissan "Time Machine"

*Time Machine* is a commercial produced for Japanese television featuring a realistically rendered animated sports car.

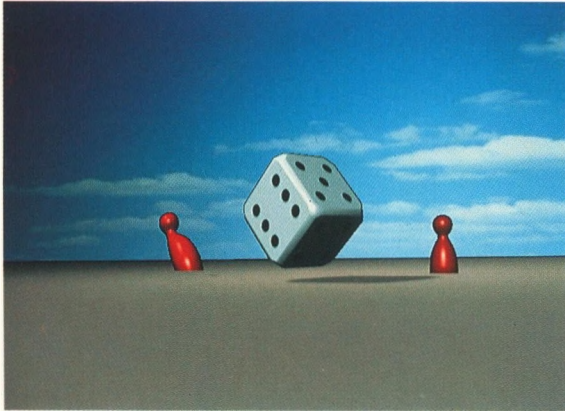
Rhythm & Hues, Inc. for Dentsu, Inc.  
Hollywood, California



### Panspermia

Panspermia: The theory that life exists and is distributed throughout the universe in the form of germs or spores.

Karl Sims  
Thinking Machines Corporation  
Cambridge, Massachusetts



### Partners

Whimsical animation highlights this commercial piece.

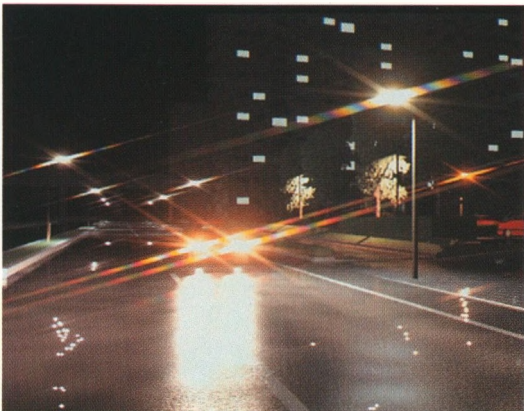
Robin Noorda  
Morphosis  
The Netherlands



### Pigment Promenade

*Pigment Promenade* proffers playful pals...a whimsical look at paint blobs having fun. Yee-Haw!

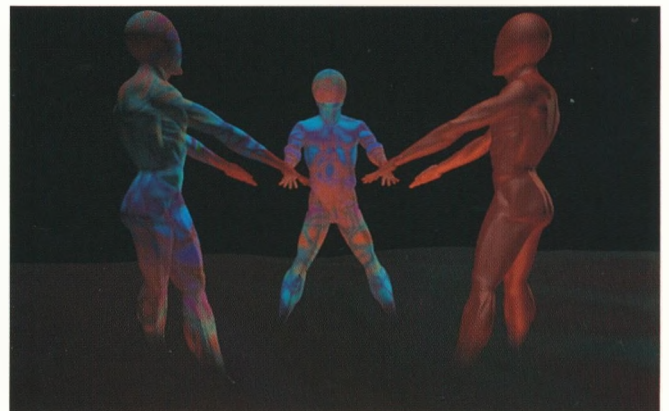
Apple Computer, Inc.  
ATG Graphics Group  
Cupertino, California



### A Passing Shower

Road surfaces, solar penumbra and streaks of light are rendered using novel techniques to produce photo-realistic visual simulation of outdoor scenes.

Hiroshima University  
Electric Machinery Laboratory  
Saijo-cho, Higashi-Hiroshima, Japan



### Prebirth

The birth of man as an assembly of three elements: mind, body, flesh, is symbolized using different transparency value and textures.

Osama M. Hashem  
New York, New York

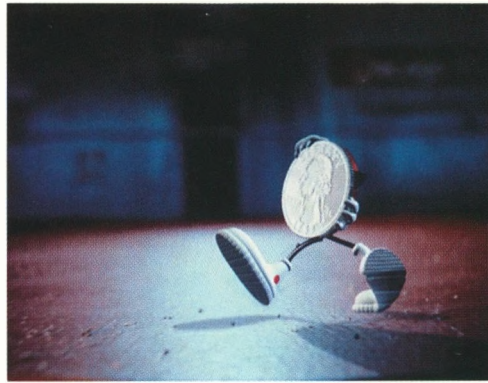




### **Robocop II**

The anti-hero in "Robocop II", a stop motion puppet, recalls his human existence through the use of a computer generated character based on a live actor.

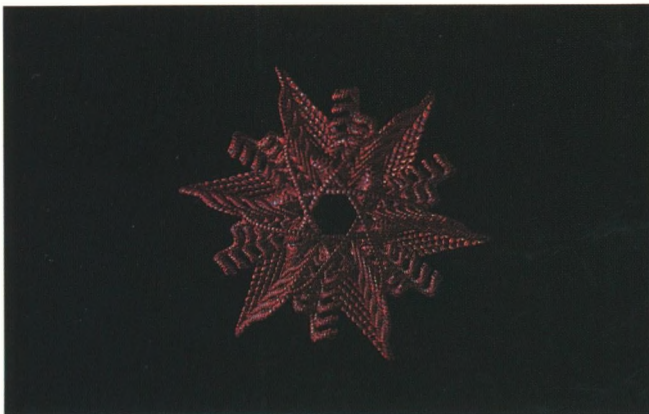
deGraf/Wahrman, Inc. in conjunction  
with the Phil Tippet Company for TOBOR Productions  
West Hollywood, California



### **7-Up "Saxophone"**

A fully animated computer generated character interacts with its live-action environment.

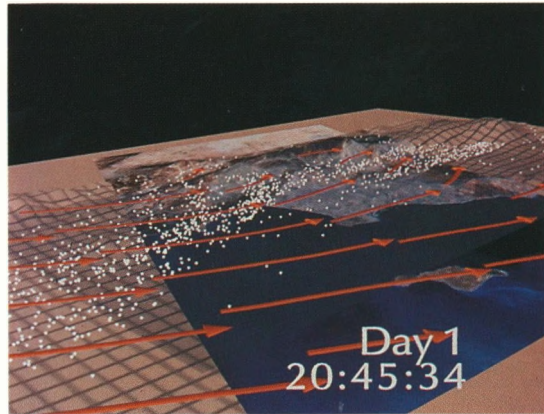
Rhythm & Hues, Inc. for Leo Burnett Inc.  
Hollywood, California



### **A Sequence from the Evolution of Form**

The beauty, elegance and content of form is expressed through computer graphics.

William Latham  
IBM UK Scientific Centre  
Hampshire, United Kingdom



### **Smog: Visualizing the Components**

This visualization shows the results of a numerical model of pollution in the Los Angeles basin.

National Center for Supercomputing Applications  
Visualization Services & Development  
Champaign, Illinois



### Solar Crisis Hologram Animation

Waging a desperate battle to divert a devastating solar flare, Earth scientists create an ultra-modern holographic display system in this feature film.

Pacific Data Images with  
Boss Films  
Sunnyvale, California



### Styro

A dog can't take a walk at night anymore.

Sinnott and Associates, Inc.  
Chicago, Illinois



### Splash Dance

This animation illustrates the techniques described in the SIGGRAPH paper, "Rapid Fluid Dynamics for Computer Graphics" in an astounding display of water effects.

Michael Kass and Gavin Miller  
Apple Computer, Inc.  
Advanced Technology Group  
Cupertino, California

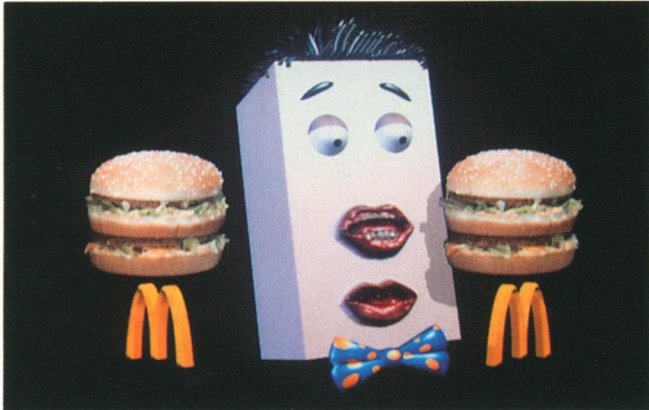


### Sunrise Animation

The use of monochromatic colours and highly controlled lighting effects focuses the viewer on proposed product designs and signage elements.

Semannia Luk Cheung  
Design Vision Inc.  
Toronto, Ontario, Canada

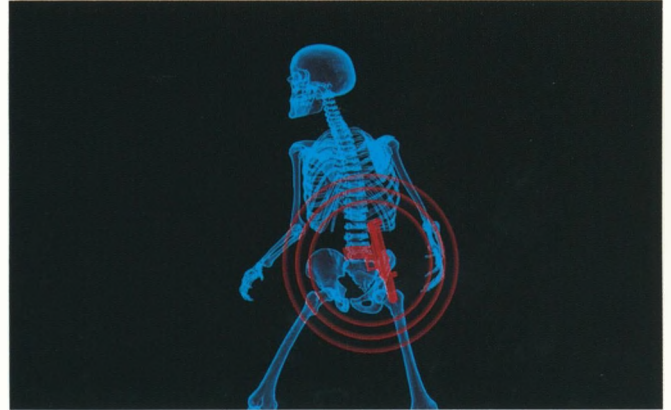




### Think Twice

A double-talking, fully dimensional, two-mouthed blockhead is made possible by Homer and Associates' new "Lip Service" technique.

Homer & Associates  
Los Angeles, California



### Total Recall

CGI human motion is used to depict real time X-Ray special effect with match integration to live action footage in this major motion picture (excerpts shown).

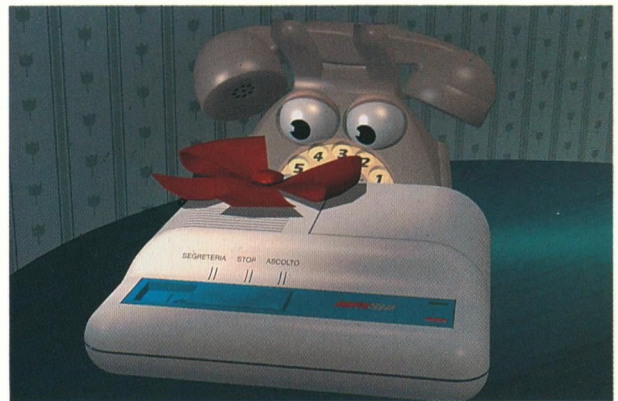
Metrolight Studios/Carolco Pictures  
Los Angeles, California



### This Is Not Frank's Planet

The misfit pilots of a small space ship talk their way through a colorful landscape looking for a Mysterious Destination.

Instructional Media Center  
California State University, Chico  
Chico, California



### Trillo's Adventures

This Italian love story stars Trillo the telephone.

Intermedia Audiovisivi-Italy  
Rome, Italy



### **Tropicana —“Wake-up”**

A thirsty straw is wakened from his dream by the arrival of a juicy orange and the chase is on.

Pixar Animation Production Group  
with Colossal Pictures  
San Rafael, California



### **Under the Puddle**

An abstract view of a rainstorm from beneath the surface of a puddle is demonstrated.

Aliza Corson  
Champaign, Illinois



### **Tyd is Geld (Time is Money)**

Produced for a Belgian television show about economics, this animation weds time and money.

Robin Noorda and Leon Wennekes  
Morphosis  
The Netherlands



### **Yun Shan**

The delicate essence of Chinese landscape painting is captured in this animation of fractal landscapes.

Semannia Luk Cheung  
Design Vision Inc.  
Toronto, Ontario, Canada



# FILM AND VIDEO THEATER CREDITS

## **ABC's World of Discovery**

### *Produced by:*

Metrolight Studios

### *Vice President Sales:*

Dobbie Schiff

### *Creative Director:*

Jon Townley

### *Executive Producer:*

Jeff Doud

### *Assistant Producer:*

Gyle Reznik

### *Art Director:*

Steve Martino

### *Modeling:*

Neil Eskuri, Con Pederson, and Alan Ridenour

### *Technical Directors:*

Patrice Dinhut, Tom Hutchinson, Rebecca Marie,  
Richard Cohen, George Karl, and Jerry Weil

### *Software:*

Yun-Chen Sung, Steve Levatt, and Mark Lasoff

### *Hardware:*

Alliant FX40-4, Solbourne 5-604, Silicon Graphics  
Workstations, Abekas A60

### *Software:*

Wavefront Preview and Metrolight Proprietary  
Software

### *Contact:*

Alan Dinoble

Metrolight Studios

5724 W. Third Street, Suite 400

Los Angeles, CA 90036 USA

213-932-0400

213-932-8440 (fax)

## **AMC "Feature Presentation"**

### *Produced by:*

Metrolight Studios

### *Creative Director:*

Jon Townley

### *Executive Producer:*

Jeff Doud

### *Director/Designer:*

Jon Townley

### *Technical Directors:*

Rebecca Marie, Melinda Tidwell, and Tom  
Hutchinson

### *Software:*

Yun-Chen Sung

### *Modeling:*

Con Pederson

### *Hardware:*

Alliant FX40-4, Solbourne 5-604, Silicon Graphics  
Workstations, Celco Film Recorder

### *Software:*

Wavefront Preview and Proprietary Software

### *Contact:*

Jim Kristoff

Metrolight Studios

5724 W. Third Street, Suite 400

Los Angeles, CA 90036 USA

213-932-0400

213-932-8440 (fax)

## **The Audition**

### *Produced by:*

Apple Computer, Inc., Advanced Technology  
Group

### *Story, Dynamics and Project*

### *Coordination:*

Gavin Miller

### *Ray-Tracing Software:*

Douglas Turner

### *Scene Design and Model Management:*

Steven Rubin

### *Dog Design and Modeling:*

Bill Maher

### *Dog Animation Technology:*

Lance Williams

### *Dog Animation, Rendering and Technology:*

Peter Litwinowicz

### *Dog Animation Software and Cannon Design:*

Libby Patterson

### *Dog Animation, Modeling and Rotoscoping Software:*

Ned Greene

### *Dog Animation:*

Kim Tempest

### *Rendering Preview Software:*

Kenneth Turkowski

### *Radiosity Software:*

Shenchang Eric Chen

### *Sound Effects and the Voice of Louie:*

Dean Blacketter

### *Music:*

Tim Taylor

### *Technical Production Assistant:*

Scott Stein

### *Rendering Angel:*

Tim Heidmann, Gary Griffin, and Jeff Hultquist

### *Special Thanks:*

Michael Kass, Roger Spreen, and David Jevans

### *Hardware:*

Apple Macintosh, Silicon Graphics

### *Software:*

In-House Animation and Rendering Code

### *Contact:*

Gavin S.P. Miller

Apple Computer, Inc.

20705 Valley Green Drive, MS 60W

Cupertino, CA 95014 USA

408-974-0186

408-974-0781 (fax)

## **BlueSky Productions Demonstration Reel**

### *Produced by:*

Blue Sky Productions, Inc.

### *President:*

David Boyd Brown

### *Executive Producer:*

Alison Brown

### *Creative Director:*

Chris Wedge

### *Research and Development:*

Michael Ferraro, Carl Ludwig, Oliver Rockwell, and  
Eugene Troubetzkoy

### *Modelor/Production Support:*

John Volny

### *Hardware:*

Sun Microsystems 4/280 and 4/260, Celco CFR  
8000 Film Recorder

### *Software:*

CGI Studio Proprietary Solids-Modeling and Ray  
Tracing Software

### *Contact:*

Alison Brown

Blue Sky Productions, Inc.

100 Executive Boulevard

Ossining, NY 10562 USA

914-941-5260

914-923-9058 (fax)

## **BONEHEAD in "Why Do You Think They Call Him Dope"**

### *Produced by:*

Peter Conn, Homer and Associates, Inc.

### *Designed and Created by:*

Michael A. Kory

### *3-Space Digitizer Courtesy of:*

Kleiser/Walczak

### *"Bonehead's Theme":*

Matt Dike, Michael Kory

### *Sound Effects:*

B5 Studios

### *Hardware:*

IRIS 3030CSA Transputer Network, Pc/A's w/Vista  
Frame Buffers, 3 Space Digitizer

### *Software:*

Wavefront 2.9 Preview, Digital Arts 3.1 Renderman  
Renderer

### *Contact:*

Michael A. Kory

c/o Homer & Associates

1420 N. Beachwood Drive

Hollywood, CA 90028 USA

213-462-4710

213-462-2109 (fax)

## **California State Lottery - "DECCO"**

### *Produced by:*

Pixar Animation Production Group with Colossal  
Pictures

### *Producers:*

Ralph Guggenheim (Pixar) and Shari Glusker  
(Colossal Pictures)

### *Animation Director:*

Robin Steele

### *Animation:*

Flip Phillips

### *Technical Director:*

Elliot Smyrl, Mike Malione, and Flip Phillips

### *Sound:*

Gary Rydstrom/Skywalker Sound

### *Hardware:*

Computer Consoles Power 6/32 processor, Evans &  
Sutherland PS350 display system

*Software:*

Pixar's "menv" modeling and animation,  
RenderMan interface

*Contact:*

Ralph Guggenheim  
Pixar  
3240 Kerner Boulevard  
San Rafael, CA 94901 USA  
415-236-4000  
415-238-0388 (fax)

**Computational Quantum Chemistry in  
Catalysis Research**

*Produced by:*

Visualization Services and Development, National  
Center for Supercomputing Applications

*Scientific Research:*

Aileen E. Alvarado-Swaisgood, Amoco Oil  
Company

*Research and Development*

*Visualization:*

Jeffrey A. Thingvold, NCSA

*Hardware:*

Silicon Graphics 4D-24OGTX, Silicon Graphics  
4D-20, Abekas A60, Abekas AGr, Abekas A70

*Software:*

Wavefront Technologies and Various In-House

*Contact:*

Dean Geiken  
152 Computing Applications Building  
605 E. Springfield Avenue  
Champaign, IL 61820 USA  
217-244-6353  
217-244-1987 (fax)

**Cuisine Art**

*Produced by:*

Leoung O'Young, Sheridan College

*Special Thanks:*

Faculty support: Jim Sayers, Mark Simon, Ken  
Walker

*Hardware:*

Compaq 386/25, Targa 16, Diaquest Frame

*Software:*

Lumana/Crystal

*Contact:*

Leoung O'Young  
36 Woodycrest Avenue  
Toronto, Ontario, Canada M4J 3A7  
416-462-3388

**Dancing SONY**

*Produced by:*

Polygon Pictures

*Producer/Art Director:*

Toshifumi Kawahara

*Animator:*

Takashi Fukumoto

*Designer:*

Yasuo Tojo

*Technical Director:*

Toshiaki Katoh

*Music:*

Yas-Kaz

*Executive Producer:*

Yasuo Kuroki (SONY)

*Producer:*

Syohachi Sakai (SONY)

*Copyright:*

SONY Corporation

*Hardware:*

SUN4/260, Silicon Graphics IRIS4D-20G,  
NEWS841

*Software:*

Original

*Contact:*

Toshifumi Kawahara  
c/o Polygon Pictures  
Bond Street T11  
2-2-43 Higashi Shinagawa,  
Shinagawa-ku  
Tokyo 140 Japan  
03-474-4321  
03-474-4322 (fax)

**Dirty Power**

*Produced by:*

Robert Lurye, The Ohio State University-Advanced  
Computing Center for the Arts and Design

*Animation:*

Robert Lurye

*Rendering Software:*

Scott Dyer

*Editor:*

Kipp Aldrich

*Music:*

Fred Maisel

*Voice Effects:*

Dave and Linda Haumann

*Software Support:*

John Fujii, Susan Amkraut, John Donkin, Jeff Light,  
and Julien Gomez

*Hardware:*

Convex CI, SUN Workstations Network, Abekas  
A60, PS300-Evans & Sutherland, Sony Beta SP  
video recorder

*Software:*

TROUT, In-house

*Contact:*

Robert Lurye  
1231 Georgia  
College Station, TX 77840 USA  
409-764-7521  
409-845-4491 (fax)

**Droomfabriek (Dream Factory)**

*Produced by:*

Jeroen Buys, Morphosis

*Design and Animation:*

Jeroen Buys

*Operator:*

Kris Mergan

*Music:*

John Mogewijs

*Hardware:*

Silicon Graphics IRIS

*Software:*

Alias

*Contact:*

Jeroen Buys  
Morphosis b.v.  
Rembrandtlaan 24A  
3723 BJ Bilthoven, The Netherlands  
30-28-72-85  
30-28-54-99 (fax)

**Ductile Flow**

*Produced by:*

Craig Reynolds, Symbolics, Inc.

*Hardware:*

Symbolics PaintAnimation System

*Software:*

S-Geometry, S-D Dynamics and S-Render

*Contact:*

Craig Reynolds  
Symbolics, Inc.  
1401 Westwood Boulevard  
Los Angeles, CA 90024 USA  
213-478-0681  
213-477-1346 (fax)

**Entropy**

*Produced by:*

Robin Noorda

*Design and Animation:*

Robin Noorda

*Music:*

Margreet Bakker

*Hardware:*

Silicon Graphics IRIS

*Software:*

Antics

*Contact:*

Robin Noorda  
Morphosis b.v.  
Rembrandtlaan 24A  
3723 BJ Bilthoven, The Netherlands  
30-28-72-85  
30-28-54-99 (fax)

**Fables Géométriques/La laitière et le  
pot au lait**

*Produced by:*

Fantome Animation

*Credits:*

Renato, Jean-Yves Grall, and George LaCroix

*Co-Production:*

Canal+, RTBF, Club Media, le CIDIS, CNC

*Design:*

Christian Hoffmann, Philippe Ravon, and Marilyn  
Talarn

*Animation:*

Anne Brotot, Xavier Duval, Phillipe Marty, and  
Fabiën Robert

*Music:*

Jacques Davidovici

*Hardware:*

Silicon Graphics

*Software:*

Explore TDI



**Contact:**

Philippe Baudart  
Fantome  
71 rue Ampère  
75017 Paris, France  
1-40-53-01-23  
1-40-53-02-07 (fax)

**Forest Fire Simulation****Produced by:**

Geoffrey Gardner, Grumman Data Systems

**Hardware:**

Silicon Graphics IRIS 4D/240 GTX

**Software:**

Grumman Modeling and Rendering in Fortran 77

**Contact:**

Geoffrey Gardner  
MS D12-237  
1000 Woodbury Road  
Woodbury, NY 11797 USA  
516-682-8417  
516-682-8022 (fax)

**The Funtastic World of Hanna-Barbera****Produced for:**

Universal Studios, Florida

**MCA Director:**

Mario Kamberg

**MCA Producer:**

Sherry McKenna

**Post Production/Optical Supervisor:**

Greg Van der Veer

**Production Manager:**

Ellen Coss

**For all sequences with the Exception of****Jetsons—Produced by:**

deGraf/Wahrman, Inc.

**CGI Effects Supervision:**

Brad deGraf and Michael Wahrman

**Producers:**

Craig Newman and Sally A. Syberg

**MCA Art Direction:**

Kerry Colonna, Allen Battino, and Dale Herigstad

**Production Manager:**

Michelle Porter

**Ship Animation:**

Brian Jennings

**Animation:**

Brian Jennings, John Grower, Ken Brain, and Brad deGraf

**Master Sculptor:**

Ken Cope

**Technical Drawing:**

Tom Betts

**Bedrock Lighting:**

Kevin Bjorke

**Bedrock Modeling:**

Liza Keith and Adrian Iler

**Scooby Lighting:**

John Adamczyk

**Scooby Modeling:**

John Adamezyk and Adrian Iler

**Launch and Warps:**

Liza Keith and Adrian Iler

**Film Recording:**

Joshua Pines

**Fred's House:**

Jim Hillin

**Editorial:**

Ladd McPartland

**Operations Manager:**

Lizzi Bones Ralston-Bugge

**MCA Happy Face Coordinator:**

Jane Nunez

**Choreography and Lighting****Coordinator:**

Dr. B.K. Berlitz

**Hardware:**

Symbolics 36XX, Silicon Graphics IRIS 4D Series

**Software:**

Perform by deGraf/Wahrman, Inc., Pixar

RenderMan, Symbolics S-Products

**Jetsons Sequence—Produced by:**

Rhythm & Hues, Inc.

**Designer/Director:**

Dan Quarnstrom

**Head Animator:**

Jean Cunningham

**Animators:**

Kevin Barnhill, Neil Richmond, Charlie Gibson,

Darren Kiner, Michael Tigar, Daniele Colajacomo,

Peter Farson, and Lorne Lanning

**Modelers:**

Darren Kiner and Jennifer Pearce

**Producer:**

Meryl Burns

**Editor:**

Rick Ross

**Executive Producer:**

Kathryn Riccio

**Special Software:**

Keith Goldfarb and Paul Newell

**Cameraman:**

David Keller

**Special Effects Supervisor:**

Ray Feeney

**Hardware:**

Silicon Graphics, 4D-80/GT

**Software:**

Rhythm & Hues Proprietary

**Character and Effects Animation****Produced by:**

Sullivan Bluth Animation Studios

**Producer:**

Thad Weinlein

**Director:**

David Steinberg

**Assistant Director:**

Ron Allen

**Directing Animators:**

Linda Miller, Larry Leker, John Pomeroy, Mark

Koetsier, Ken Duncan, and Jean Morel

**Character Animators:**

Mark Pudleiner, Nasos Vakilos, Shane Zalvin, Matt

Bates, Joe McDonough, Dave Kupcyk, Bill

Waldman, and Todd Waterman

**Opticals Produced by:**

Pacific Title & Art Studio

**Optical Supervisor:**

Phillip Feiner

**Optical Camera Operators:**

Mike Glickman, Doug Nogle, and Benita Nelson

**Line Up:**

Dick Ramirez

**Contact:**

Michael Wahrman

deGraf/Wahrman

8936 Keith Avenue

West Hollywood, CA 90069 USA

213-278-2135

213-278-2054 (fax)

**Gas Pipe****Produced by:**

SVC Television for Robinson Lambie-Nairn

**Computer Animator:**

Phil Hurrell

**Traditional Animator:**

Neville Astley

**Hardware:**

Symbolics 3650 and 3620

**Software:**

Symbolics S-Products

**Contact:**

Phil Hurrell

SVC Television

142 Wardour Street

London W1V 3AU, England

44 71-734-1600

44 71-437-1854 (fax)

**The Great “Blue Ouah Ouah”****Produced by:**

Fantome Animation

**Hardware:**

Silicon Graphics

**Software:**

Explore TDI

**Contact:**

Philippe Baudart

Fantome

71 rue Ampère

75017 Paris, France

1-40-53-01-23

1-40-53-02-07 (fax)

**Grinning Evil Death****Produced by:**

Mike McKenna and Bob Sabison, MIT Media Lab

**Credits:**

David Atherton, David Chen, Michael Johnson,

Peter Schroeder, David Small, Steve Strassmann,

and Radhika Nagpal

**Hardware:**

HP 835 Series 9000 Turbo SRX Workstations,

Wacom Pressure Sensitive Tablet, Connection

Machine II

**Software:**

Custom dynamic simulation, rendering, cel and

multiplane camera simulation software

*Contact:*

Mike McKenna  
Bob Sabiston  
20 Ames Street  
E15-023  
Cambridge, MA 02139 USA  
617-253-0661  
617-258-6264 (fax)

**The Hole**

*Produced by:*

Motonori Sakakibara NAMCO LTD.

*Hardware:*

Silicon Graphics IRIS 4D-20G

*Software:*

Namco Original

*Contact:*

Motonori Sakakibara  
Namco Yokohama Mirai Kenkyuto  
15-1, Shenei-Cho, Kouhoku-Ku  
Yokohama, 223 Japan  
045 593 0711  
045 592 8086 (fax)

**I Have Never Seen But I Know**

*Produced by:*

Midori Kitagawa De Leon

*Music:*

Daniel Remler

*Post Production:*

Robert Patterson

*Hardware:*

Sun3, Sun4, Abekas

*Software:*

Branching Object Generation and Animation  
System (BOGAS) by Midori Kitagawa De Leon  
Trout (Rendering Software) by Scott Dyer

*Contact:*

Midori Kitagawa De Leon  
c/o Visualization Laboratory  
College of Architecture  
Texas A & M University  
College Station, TX 77843-3137 USA  
409-845-3465  
409-845-4491 (fax)

**ILM Computer Graphics  
SIGGRAPH '90 Demo Reel**

*Produced by:*

Industrial Light & Magic, A Division of Lucasfilm  
Ltd.

*Credits:*

Computer Graphics Department, Industrial Light  
& Magic

*Hardware:*

Silicon Graphics 4D-80GT, 4D-240's

*Software:*

PIXAR RenderMan, ALIAS modeling system,  
Proprietary modeling, animation and image-  
processing tools

*Contact:*

Nancy St. John  
Industrial Light & Magic  
P.O. Box 2459  
San Rafael, CA 94912 USA  
415-258-2000  
415-454-4768 (fax)

**In Search of Muscular Axis**

*Produced by:*

Polygon Pictures

*Producer/Art Director:*

Toshifumi Kawahara

*Director:*

Takashi Fukumoti

*Animator:*

Hideki Okano

*Technical Director:*

Toshiaki Katoh

*Music:*

Yas-Kaz

*Collaborators:*

Keiichi Kameda, Yasuo Tojo, Katsuhara Hiruma,  
Shigeaki Hayashi, Akira Yoshida, Tatsuya  
Shimamoro, and Masuharu Endo

*Copyright:*

Polygon Pictures

*Hardware:*

SUN4/260, Silicon Graphics IRIS4D-20G

*Software:*

Original

*Contact:*

Toshifumi Kawahara  
c/o Polygon Pictures  
Bond Street T11  
2-2-43 Higashi Shinagawa,  
Shinagawa-ku  
Tokyo 140 Japan  
03-474-4321  
03-474-4322 (fax)

**Landscape Dynamics of Yellowstone  
Park**

*Produced by:*

Visualization Services & Development, National  
Center for Supercomputing Applications

*Principal Investigator:*

David Kovacic

*Visualization:*

Alan Craig

*Post Production:*

Robert Patterson

*Hardware:*

CRAY X-MP/48, Macintosh II

*Software:*

Various in-house

*Contact:*

Colleen Bushell  
152 Computing Applications Building  
605 E. Springfield Avenue  
Champaign, IL 61820 USA  
217-244-1987  
217-244-1987 (fax)

**Lava Jr.**

*Produced by:*

Randy Bauer

*Audio:*

Robert McEntee and Glenn Wolfe

*Special Thanks:*

Bryan Russmann and Renee Louis Apru

*Hardware:*

Silicon Graphics 4D-80GT

*Software:*

Wavefront

*Contact:*

Randy Bauer  
Luxo-Klone Productions  
1717 W. Sixth Street, Suite 150  
Austin, TX 78703 USA  
512-476-0400  
512-476-6382 (fax)

**Life Savers Holes—"Babies"**

*Produced by:*

Pixar Animation Production Group with Colossal  
Pictures

*Producers:*

Craig Good (Pixar) and Shari Glusker (Colossal  
Pictures)

*Animation:*

John Lasseter

*Technical Direction:*

Yael Milo

*Technical Consultant:*

Eben Ostby

*Sound:*

Gary Rydstrom/Skywalker Sound

*Hardware:*

Computer Consoles Power 6/32 processor, Evans  
and Sutherland P350 display

*Software:*

Pixar's "menv" modeling and animation software,  
RenderMan interface

*Contact:*

Ralph Guggenheim  
Pixar  
3240 Kerner Boulevard  
San Rafael, CA 94901 USA  
415-236-4000  
415-238-0388 (fax)

**Masterplan**

*Produced by:*

Jeroen Buys, Morphosis

*Design and Animation:*

Jeroen Buys

*Operator:*

Kris Mergan

*Music:*

Bart v.d.Horst

*Hardware:*

Silicon Graphics IRIS

*Software:*

Alias



**Contact:**

Jeroen Buys  
Morphosis b.v.  
Rembrandtlaan 24A  
3734 BJ Bilthoven, The Netherlands  
30-28-72-85  
30-28-54-99 (fax)

**Mathematics! Similarity and the Story of  $\pi$**

**Produced by:**

Jim Blinn, Project Mathematics!, California  
Institute of Technology

**Credits**

Tom Apostel, Jim Blinn and Don Delson

**Hardware:**

HP Vectra 25, #86 based PC Clones

**Software:**

Home grown

**Contact:**

Jim Blinn  
305 S. Hill Street  
Pasadena, CA 91106 USA  
818-356-3758  
818-356-3763 (fax)

**McDonald's "Save the Universe"**

**Produced by:**

Metrolight Studios/Boss Films

*Metrolight Studios—Vice President,*

**Sales:**

Dobbie Schiff

**Creative Director:**

Jon Townley

**Executive Producer:**

Jeff Doud

**Line Producer:**

Gayle Reznik

**Technical Director:**

Rebecca Marie

**Modeling:**

Con Pederson

**Software:**

Yun-Chen Sung

**Boss Films—Executive Producer:**

Ellen Somers

**Line Producer:**

Christine Sellin

**Director:**

Jim Rygiel

**Contact:**

Jon Townley  
Metrolight Studios  
5724 W. Third Street, Suite 400  
Los Angeles, CA 90036 USA  
213-932-0400  
213-932-8440 (fax)

**More Bells and Whistles**

**Produced by:**

Wayne Lytle

**Music, Graphics and Software:**

Wayne Lytle

**Systems Support:**

Judy Warren

**Hardware:**

Rendered in AIX/370 (MP) on IBM 3090-600J's,  
Stellar GS1000

**Software:**

Proprietary musical-event driven animation  
software, Texture 3.0 music-sequencer, Wavefront

**Contact:**

Wayne Lytle  
Cornell National Supercomputer Facility  
B49 Caldwell Hall  
Ithaca, NY 14853 USA  
607-255-3985  
607-255-0823 (fax)

**The Nature**

**Produced by:**

Dentsu Inc./Tokyu Agency Inc.  
Client, The Ministry of Postal Services,  
Nippon Telegraph and Telephone Corp., and  
Kokusai-Denshindenwa Company

**Producer and Script:**

Madoka Katoh (Dentsu Inc.)

**Producer:**

Haruo Murao (Intervoice Inc.)  
Tatuhiko Akamatu (Cinesell Japan Inc.)

**Assistant Producer:**

Hiroshi Soma (Dentsu Prox Inc.)

**Director:**

Jyun Asakawa

**Assistant Director:**

Shinji Ootake

**Camera:**

Kiyoshi Nishiura

**Light:**

Noboru Mori

**Film Editing:**

Hideaki Inoue

**Music Composer:**

Akira Inoue

**Links Corporation—CG Staff**

**CG and SFX Producer:**

Masaaki Taira

**CG Director:**

Hideki Nakano and Takahiko Akiyama

**Creator:**

Jyun Watanabe and Kimiko Kai

**Animator:**

Norio Saito

**Technical Manager:**

Kotaro Abe

**Technical Director:**

Masanori Ihara, Takahiro Yamamoto, Yoshihisa  
Hirano and Koichi Noguchi

**Software Programmer:**

Toshio Tukada and Ahinji Tanaka

**System Engineer:**

Atushi Shiokawa

**Production Manager:**

Hiroyuki Seshita

**Tree Simulation:**

Cirado (France), Phillipe de Reffye, Daniel  
Barthelemy and Pierre Dinouard

**NAMCO CG Project—Creators:**

Kenji Watanabe, Kazutaka Shirato, Jyun Watanabe,  
Koichi Hiraga, Yasuo Ooba, Tohiaki Kato, Akiko  
Wakabayashi and Tatushi Tuboi

**Film Recording:**

Kodak Imagic K.K.

**Nega Editing:**

Yoshio Naganuma

**Film Processing**

Imagic Corporation

**Optical:**

Makoto Nakamura (Imagica)

**Timing:**

Yoshiyuke Kiga (Imagica)

**Optical Advisor:**

Yutaka Kawamura

**Music Producer:**

Akio Oomori

**Music Director:**

Naoto Sekiguchi

**Sound Effects:**

Masatoshi Nizumachi

**Hardware:**

LINKS -2 (Original Custom made), SUN 4/280

Silicon Graphics IRIS -4D

**Software:**

Original

**Contact:**

Masaaki Taira  
3-13-6, Higashi-shinagawa  
Shinagawa-ku  
Tokyo 140 Japan  
03-450-8181  
03-471-2607 (fax)

**The Next Giant Leap**

**Produced by:**

Visual Communications Lab - NASA/Johnson  
Space Center

**Directed by:**

Gunter Sabionski

**Animation:**

Marco Zambetti

**Editor:**

Roger Mitchel

**Hardware:**

Silicon Graphics IRIS 4D-80GTX (Animation)  
Celerity 1200 (Render Engine)

**Software:**

Wavefront Technology

**Contact:**

Gunter Sabionski  
NASA/Johnson Space Center  
JL4  
Houston, TX 77058 USA  
713-483-8106  
713-483-5200 (fax)

### **1990 SIGGRAPH Demo**

#### *Produced by:*

Lamb & Company, Inc.

#### *Credits:*

Larry Lamb, Bob Born, Paul Churchill, Keith Cormier, Marcia Dietrich, Scott Gaff, Gav Gnatovich, Dale Hughes, Doug Kingsbury, Pamela Lehn, Jack Lewis, Mark Mariutto, Richard Miller, Diane Murphy, Dave Novak, Doug Pfeifer, Ron Pitts, Jim Russell, Betsy Sheehan, and Julie Smith

#### *Hardware:*

Silicon Graphics Iris 4D, Abekas A60

#### *Software:*

Wavefront, Lamb & Company Proprietary

#### *Contact:*

Larry Lamb

Lamb & Company, Inc.

1010 South 7th Street

Minneapolis, MN 55445 USA

612-333-8666

612-333-9173 (fax)

### **Nissan "Time Machine"**

#### *Produced by:*

Rhythm & Hues, Inc. for Dentsu, Inc.

#### *Credits:*

Cliff Boule, Ichiro Kinoshita, Kiyoshi Sakamoto, Peter Farson, Charlie Gibson, Pauline Ts'o, Kenji Sugimoto, Keith Godfarb and Scott Dyer

#### *Hardware:*

Silicon Graphics, SGI 4D-80/GT

#### *Software:*

Rhythm & Hues Proprietary

#### *Contact:*

Charlie Gibson

Rhythm & Hues, Inc.

910 North Sycamore Avenue

Hollywood, CA 90038 USA

213-851-6500

213-851-5505 (fax)

### **Océ Copy Simulation**

#### *Produced by:*

Adriaan Lokman, Morphosis

#### *Animation:*

Adriaan Lokman

#### *Hardware:*

Silicon Graphics IRIS 3130

#### *Software:*

Antics

#### *Contact:*

Adriaan Lokman

Morphosis b.v.

Rembrandtlaan 24A

3723 BJ Bilthoven, The Netherlands

30-28-72-85

30-28-54-99 (fax)

### **Panspermia**

#### *Produced by:*

Karl Sims, Thinking Machines Corporation

#### *Organization:*

Lew Tucker

#### *Sound:*

Dave Atherton, David Grimes, Steve Blake, Target Productions

#### *Hardware:*

Connection Machine CM-2

#### *Software:*

CM-Render and simulation software written in Starlisp for data-parallel execution

#### *Contact:*

Karl Sims

Thinking Machines Corporation

245 First Street

Cambridge, MA 02142 USA

617-876-1111

617-876-1823 (fax)

### **Partners**

#### *Produced by:*

Robin Noorda, Morphosis

#### *Design and Animation:*

Robin Noorda

#### *Operating:*

Bert Verhoeff

#### *Logo Design:*

Monique Ureeft

#### *Hardware:*

Silicon Graphics IRIS

#### *Software:*

Vertigo

#### *Contact:*

Robin Noorda

Morphosis b.v.

Rembrandtlaan 24A

3723 BJ Bilthoven, The Netherlands

30-28-7285

30-28-54-99 (fax)

### **A Passing Shower**

#### *Produced by:*

Hiroshima University, Electric

Machinery Laboratory

#### *Credits:*

Eihachiro Nakamae

#### *Hardware:*

Sequent S81 and Silicon Graphics IRIS 4D

#### *Software:*

Original

#### *Contact:*

Eihachiro Nakamae

Faculty of Engineering

Hiroshima University

Saijo-cho, Higashi-Hiroshima 724 Japan

824-22-7111 ext. 3445

824-22-7195 (fax)

### **Pigment Promenade**

#### *Produced by:*

ATG Graphics Group of Apple Computer, Inc.

#### *Animation and Story:*

Peter Litwinowicz and Elizabeth Patterson

#### *Noise:*

Dean Blackketter

#### *Special Thanks:*

Lance Williams and Scott Stein

ATG Graphics Group

#### *Software:*

Peter Litwinowicz, Ned Greene and Lance Williams

#### *Hardware:*

Macintosh II, Silicon Graphics IRIS

#### *Software:*

Modeled and rendered by in-house software; sound recorded and mixed by Digidesign's sound tools

#### *Contact:*

Peter Litwinowicz

Apple Computer, Inc.

20705 Valley Green Drive, MS 60W

Cupertino, CA 95014 USA

408-974-1752

408-474-0781 (fax)

### **Prebirth**

#### *Produced by:*

Osama M. Hashem

#### *Modeling and Animation:*

Osama M. Hashem

#### *Utility Programs:*

Greg Dismond

#### *Hardware:*

Silicon Graphics 4D-25

#### *Software:*

Wavefront Technologies 3D Animation and Creator paint

#### *Contact:*

Osama M. Hashem

220 E. 25th Street, Apt #5A

New York, NY 10010 USA

212-779-1923

212-486-2664 (fax)

### **Robocop II**

#### *Produced by:*

deGraf Wahrman, Inc. in conjunction with the Phil Tippet Company for TOBOR Productions and Orion Pictures; Starring Tom Noonan

#### *Robocop Producer:*

Jon Davison

#### *Robocop Director:*

Irvin Kirschner

#### *Stop-motion Effects Direction:*

Phil Tippet

#### *Art Direction:*

Craig Davies

#### *CGI Effects Supervision:*

Michael Wahrman and Brad deGraf

#### *CGI Producers:*

Sally Syberg and Anne Adams

#### *Technical Direction:*

Greg Ercolano



*Puppeteering:*

Trey Stokes

*Modeling:*

Ken Cope

*Additional Technical Direction:*

Adrian Iler

*Special Face Consultant:*

Lance Williams, Apple Computer, Inc.

*Hardware:*

Silicon Graphics IRIS 4D 70/GT, Symbolics

36XX, Cyberware

*Software:*

Performance Character Animation and Cyberware

Correlation by deGraf/Wahrman, Inc., Geometric

modeling software by Symbolics Graphics Center

*Contact:*

Michael Wahrman

deGraf/Wahrman, Inc.

8936 Keith Avenue

West Hollywood, CA 90069 USA

213-278-2135

213-278-2054 (fax)

**A Sequence from the Evolution of Form**

*Produced by:*

William Latham and IBM UK Scientific Centre

*Artist:*

William Latham

*Software:*

Stephen Todd, Peter Quarewoe

*Animation:*

Mark Owen

*Soundtrack:*

Mark Atres

*Hardware:*

IBM 3090, IBM 5080 Display

*Software:*

Winsom Esme

*Contact:*

William Latham

IBM UK Scientific Centre

St. Clement Street Winchester

Hampshire SO23 9DR United Kingdom

44-962-844-191

44-962-840-094 (fax)

**7-Up "Saxophone"**

*Produced by:*

Rhythm & Hues, Inc. for Leo Burnett, Inc.

*Credits:*

Richard Taylor, Paul Janas, Bill Meracl, Larry

Weinberg, Jean Cunningham, Min, Rick Ross, Lisa

O'Brien, Nick Bates, Darr Hawthorne, Keith

Goldfarb, and Charlie Gibson

*Hardware:*

SGI Predator, SGI 4D80/GT

*Software:*

Rhythm & Hues Proprietary

*Contact:*

Charlie Gibson

Rhythm & Hues, Inc.

910 North Sycamore Avenue

Hollywood, CA 90038 USA

213-851-6500

213-851-5505 (fax)

**Smog: Visualizing the Components**

*Produced by:*

Visualization Services & Development, National

Center for Supercomputing Applications

*Scientific Research:*

Greg McRae and Ted Russell, Carnegie Mellon

University and Pittsburgh Supercomputer

*Visualization:*

Michael McNeill, William Sherman and Aliza

Corson

*Hardware:*

Silicon Graphics 240 GTX, Abekas A64 and A72

*Software:*

Wavefront Technologies and various in-house

*Contact:*

Colleen Bushell

152 Computing Applications Building

605 E. Springfield Avenue

Champaign, IL 61820 USA

217-244-6830

217-244-1987 (fax)

**Solar Crisis Hologram Animation**

*Produced by:*

Pacific Data Images/Boss Films

*Credits—PDI:*

Jamie Dixon, Tad Beier, Theresa Ellis, Terry

Emmons, Rex Grignon, Glenn Entis, and David

MuCullough

*Credits—Boss Films:*

Jim Rygiels, Niel Krepela, Mauro Maressa, Mike

Sweeney, Terry Windell, Richard Edlund, Ellen

Somers, and Christine Sellin

*Copyright:*

1990 Japan America Picture Company, Inc.

*Contact:*

Jamie Dixon

1111 Karlstad Drive

Sunnyvale, CA 94089 USA

408-745-6755

213-823-0433 (fax)

**Splash Dance**

*Produced by:*

Michael Kass and Gavin Miller, Apple Computer

Advanced Technology Group

*Hardware:*

Silicon Graphics 4D/210

*Software:*

Custom

*Contact:*

Michael Kass

Apple Computer, Inc.

MS 60W

20705 Valley Green Drive

Cupertino, CA 95014 USA

408-974-1754

408-974-0781 (fax)

**Styro**

*Produced by:*

Sinnott and Associates, Inc., Chicago, Tom Sinnott,

Joe Doll, John Putnam, and Terry Fryer

*Hardware:*

Silicon Graphics IRIS 4D-70

*Software:*

Wavefront

*Contact:*

Tom Sinnott

676 N. Lasalle Street

Chicago, IL 60610 (USA)

312-440-1875

312-440-1537 (fax)

**Sunrise Animation**

*Produced by:*

Semmania Luk Cheung, Design Vision Inc.

*Producer:*

George Hughes

*Director:*

Semannia Luk Cheung

*CG Designers:*

Semannia Luk Cheung, Mary Lynn Machado, and

John Coldrick

*Product Design:*

Terrelonge Design

*Hardware:*

Silicon Graphics 4D-70, 4D-25

*Software:*

Alias/2

*Contact:*

Semannia Luk Cheung

Design Vision Inc.

479 Wellington Street West

Toronto, Ontario, Canada M5V 1E7

416-585-2020

**Think Twice**

*Produced by:*

Homer & Associates

*Director:*

Peter Conn

*Animation Director/Animator:*

Michael A. Kory

*Producer:*

D. Rufus Friedman

*Technical Director:*

Larry Guterman

*Agency:*

Davis, Ball, and Colambatto

*Art Director:*

Jim Benedict

*Copywriter:*

Jeff Gelberg

*Sound Design:*

Hein Hoven/B5 Studios

*Hardware:*

Silicon Graphics IRIS 3130, PC/At's w/Vista frame buffers and transputer network

*Software:*

Wavefront 2.9 preview, Digital Arts 3.1 w/Transcender renderer

*Contact:*

Peter Conn

Homer & Associates

1420 N. Beachwood Drive

Los Angeles, CA 90028 USA

213-462-4710

213-462-2109 (fax)

**This is not Frank's Planet**

*Produced by:*

Instructional Media Center, California State University, Chico

*Credits:*

Mark Swain, Mike Wellins

*Hardware:*

ArtStar, Sony D2, Betacam SP, CMX 3100, Sony 900, Abekas A53D, Abekas A42, Korg T3

*Contact:*

Mark Swain

Instructional Media Center

California State University, Chico

Chico, CA 95929-0005 USA

916-895-4421

**Total Recall**

*Produced by:*

Metrolight Studios/Carolco Pictures

*CGI Animation Director:*

Tim McGovern

*CGI Animation Line Producer:*

George Merkert

*Senior Animator:*

Rich Cohen

*Senior Animator:*

Tom Hutchinson

*Animator:*

George Karl

*Data Modeling:*

Con Pederson, Neil Eskuri, Alan Ridenour

*Software Designer:*

Steve Kievatt, Yun Chen Sung, Mark Lasoff

*Animation Camera:*

Bill Kent

*General Manager, Metrolight Studios:*

Jim Kristoff

*Contact:*

Dobbie Schiff

Metrolight Studios

5724 W. Third Street, Suite 400

Los Angeles, CA 90036 USA

213-932-0400

213-932-8440 (fax)

**Trillo's Adventures**

*Produced by:*

Intermedia Audiovisivi-Italy

Massimo Temi for "Lo Specchio" Advertising

*Script, Animation and Design:*

Laura Di Biagio, and Mauro Di Flaviano

*Music:*

Tony Carnevale

*Hardware:*

Compaq 386 20

*Software:*

Cubicomp Picturemaker R60, Vers. 3.0

*Contact:*

Laura Di Biagio

Intermedia Audiovisivi S.N.C.

Piazza Eugenio Morelli, 8

Rome, Italy

6-681-1381

6-681-1471 (fax)

**Tropicana "Wake Up"**

*Produced by:*

Pixar Animation Production Group with Colossal Pictures

*Producer:*

Ralph Guggenheim (Pixar) and Shari Glusker (Colossal Pictures)

*Animation:*

John Lasseter

*Modeling:*

Yael Milo, Craig Good and Flip Phillips

*Music:*

Gary Rydstrom/Skywalker Sound

*Hardware:*

Workstations comprised of a Computer Consoles

Power 6/32 processor and Evans & Sutherland

PS350 display system

*Software:*

Pixar's "menv" modeling and animation,

RenderMan interface

*Contact:*

Ralph Guggenheim

Pixar

3240 Kerner Boulevard

San Rafael, CA 94901 USA

415-236-4000

415-238-0388 (fax)

**Tyd is Geld (Time is Money)**

*Produced by:*

Robin Noorda and Leon Wennekes, Morphosis

*Design:*

Robin Noorda, Leon Wennekes

*Operator:*

Uris Mergan

*Hardware:*

Silicon Graphics IRIS + Pixar

*Software:*

Alias/1

*Contact:*

Robin Noorda

Leon Wennekes

Morphosis b.v.

Rembrandtlaan 24A

3723 BJ Bilthoven, The Netherlands

30-28-72-85

30-28-54-99 (fax)

**Under the Puddle**

*Produced by:*

Aliza Corson at the Advanced Computing Center for the Arts & Design, Ohio State University

*Concept and Animation:*

Aliza Corson

*Music:*

Daniel Remler

*Software (particle system):*

Susan Amkraut

*Image Processor:*

John M. Fujii

*Renderer:*

Scott Dyer

*Post Production:*

National Center for Supercomputing Applications, University of Illinois at Urbana-Champaign

*Editor:*

Robert Patterson

*Hardware:*

Sun Microsystems, Abekas Digital Recorder

*Software:*

All software written at A.C.C.A.D.

*Contact:*

Aliza Corson

804 W. Church Street

Champaign, IL 61820 USA

217-244-5663

217-244-1987 (fax)

**Yun Shan**

*Produced by:*

Semannia Luk Cheung

*Designed and Produced by:*

Semannia Luk Cheung

*Hardware:*

VAX 11/785, Gems Framestore, Dunn Camera

*Software:*

Fractal software by Semmania Luk Cheung,

Rendering software by John Vince

*Contact:*

Semannia Luk Cheung

c/o Design Vision Inc.

479 Wellington Street West

Toronto, Ontario, Canada M5V 1E7

416-585-2020

416-585-2389 (fax)



# ANIMATION SCREENING ROOM CREDITS

## **Acolytes**

### *Produced by:*

Bob White at Simmons College and the Museum School

### *Special Thanks:*

Larry Johnson

### *Hardware:*

Commodore Amiga 2500

### *Software:*

BYTE by BYTE's Sculpt-Animate 4D

### *Contact:*

Bob White

Simmons College Dept. of Communications

300 The Fenway

Boston, MA 02115

617-738-2099

## **Adventures of Chromie "on the Rocks"**

### *Produced by:*

Production Masters, Inc.

### *Story and Animation:*

Renee Saucikie, Rich Yasick, Tom Casey

### *Hardware:*

Silicon Graphics equipment, Ampex AVA-3

### *Software:*

Alias Research, AVA-3, Artisan, 42 INC, In-house

### *Contact:*

Tom Casey

Production Masters, Inc.

321 First Avenue

Pittsburgh, PA 15222

412-281-8500

412-391-7529 (fax)

## **Animation-Agony & Ecstasy 30 Times a Second**

### *Produced by:*

Stephen A. Wroble

### *Recording and Dubbing:*

Schoolcraft College Media Center

### *Hardware:*

Amiga 500

### *Software:*

Deluxe Paint 2.0, Quickflix 0.13

### *Contact:*

Stephen A. Wroble

818 North Holbrook

Plymouth, MI 48170

313-459-9155

313-459-7881 (fax)

## **Calibre Digital Design Compilation Reel**

### *Produced by:*

Calibre Digital Design Inc.

### *Director/Designer/Animator:*

Neil Williamson and Chris Armstrong

### *Animator:*

Andrew Grant

### *Producer/Production Manager*

Cindy Cosenzo

### *Hardware:*

386 Compaq computer, 32 bit VISTA system 300

meg hard drive, BVW70 Betacam SP, RGB Camera

### *Software:*

Time Arts Crystal/Lumena

### *Contact:*

Cindy Cosenzo

c/o Calibre Digital Design, Inc.

2 Melanie Drive, Unit 5

Bramalea, Ontario, CANADA

L6T 4K9

416-792-7611

## **Camera Work**

### *Produced by:*

Center for Computer Art and Animation, William

Paterson College

### *Director:*

David Haxton

### *1st Assistant Director:*

Thomas Lee

### *2nd Assistant Director:*

Craig Kovacs

### *Technical Director:*

Wayne Herman

### *Hardware:*

Silicon Graphics 4D and 3130 computers

### *Software:*

Alias 1 and Alias 2

### *Contact:*

David Haxton

Art Department

William Paterson College

300 Pompton Road

Wayne, New Jersey 07470

201-595-2799

201-595-3273

## **Cat Food!**

### *Produced by:*

Superfluo s.r.l.

### *Hardware:*

Based on 386-486

### *Software:*

In-house

### *Contact:*

Francesco Chiarini

v.s. Felice 83 40122

Bologna, ITALY

## **CGI Demo #4**

### *Produced by:*

Post Perfect, Inc.

### *Created by:*

Dean Winkler, Scott Gordon, Don Butler, Y. Tim

Farrell and the Staff of Post Perfect

### *Hardware:*

Silicon Graphics 4D - 240, 4D-20, 3130 and

Celerity 1260, Abekas A-60

### *Software:*

Wavefront ver. 2.9 and Post Perfect in-house object creation/interpolation

### *Contact:*

Dean Winkler

c/o Post Perfect, Inc.

220 East 42nd Street

New York, NY 10017

212-972-3400

212-972-9085 (fax)

## **Choregraphing Goal-Oriented Motion Using Cost Functions**

### *Produced by:*

David E. Breen, Phillip H. Getto

### *Credits:*

Rensselaer Design Research Center

### *Hardware:*

Vaxstation II/GPX, E & S P5390, SUN 4/280, R4i

Model one/380

### *Software:*

The Clockworks

### *Contact:*

David E. Breen

Rensselaer Design Research Center, CII 7015, RPI

New York, NY 12180-3590

518-276-6482

579-276-2702 (fax)

## **Cold Fronts Moving Across the North Atlantic**

### *Produced by:*

Bill Hibbard, Dave Santek

### *Credits*

Data from the European Center for Medium-Range

Weather Forecasts

### *Hardware:*

Stardent ST-2000

### *Software:*

VIS-5D by Bill Hibbard and Dave Santek of SSEC

### *Contact:*

Bill Hibbard

Space Science & Engineering Center

1225 W. Dayton Street

Madison, WI 53706

608-263-4427

608-263-6738 (fax)

## **The Dream of Mr. M**

### *Contact:*

Hiroshi Sakamoto

c/o Fuji TV Newtork, Inc.

3-1 Kawada-chou, Shinjuku-ku

Tokyo 182 JAPAN

81-2-253-1111 ext. 3426

81-3-357-6261 (fax)

## **Earthecture Sub-I**

### *Produced by:*

Green Homes, M3, Plus One, Inc.

### *Credits*

Green Homes, Plus One Inc., Shin Takamatsu

Architects & Associates

### *Hardware:*

Hewlett Packard HP9000

### *Software:*

In-house

**Contact:**

Ken Roger Sawai  
Plus One, Inc.  
803 Advance Esaka  
8-10 Toyotsu-shi  
Osaka 564, JAPAN  
81-6-821-0801  
81-6-821-0802 (fax)

**Edo**

**Produced by:**

Fujita Corporation, IBM Japan

**Credits**

Fujita Corporation, IBM Japan

**Hardware:**

IBM 3090, IBM 3080, DAIKIN COMTEC 3555

**Software:**

COMPASS of Fujita Co., DYNA-COMPASS of  
Fujita Co. and DAIKIN Industries, Ltd., Rendering  
Subroutine Package of IBM Japan

**Contact:**

Kazutoshi Sugimoto  
IBM Research  
Tokyo Research Laboratory  
5-19 Sanbancho, Chiyoda-ku  
Tokyo 102, JAPAN  
81-3-288-8245  
81-3-265-4370 (fax)

**The Effects of Forces, Masses & Springs  
on Airborne Typography**

**Produced by:**

Design/Effects is: Bill Chapman, Clay Croker, Ran  
Coney, Barry Dempsey, Evette Everette, Frederike  
Gravenstien, Kerry Kenemer, Greg Killmaster, Ed  
Kramer, Henry LaBounta, Jack Maloney, Jim  
Moorhead, Bill Schultz, Barbara Smith, Fred  
Sotherland, Dennis Webb, Vicki Webb, Joe Hill  
White, Charlie Willis, and Lisa Woods

**Hardware:**

Silicon Graphics 4D/80GT, Abekas A60, Sony  
Durl000, Quantel Digital Compositing Suite

**Software:**

Wavefront Advanced Visualizer, Barco Creator,  
Proprietary Dynamic Constraint and Utilities

**Contact:**

Barry Dempsey  
Design/Effects  
535 Plasamour Drive  
Atlanta, GA 30324  
404-876-7149  
404-876-8956 (fax)

**Electron Densities of the AZT  
Molecule**

**Produced by:**

Fred Dech, T.J. O'Donnell, EVL

**Narration:**

T.J. O'Donnell

**Credits:**

Additional computation done at N.S.C.A., Edited  
at E. & C Media, Chicago

**Hardware:**

Cray2, IBM 3081, AT&T Pixel Machine,  
Ardent Titan

**Software:**

Gaussian '86, AT&T Pixel Machine Piclib, C,  
GRAMPS

**Contact:**

Fred Dech, T.J. O'Donnell  
Electronic Visualization Laboratory  
University of Illinois at Chicago  
Chicago, IL 60680  
312-996-3002  
312-413-0024 (fax)

**Escape to Planet Earth**

**Produced by:**

Chris Walker, Jan Fritze

**Credits:**

Chris Walker, Jan Fritze, Geoffrey Fennell, Sharon  
Compton, and Katherine Percy

**Hardware:**

286 PC with Definicon

**Software:**

Digital Arts

**Contact:**

Chris Walker  
Mr. Film  
228 Main Street #10  
Venice, CA 90291  
213-396-0146  
213-396-5065 (fax)

**Flashback**

**Produced by:**

Nadia Thalmann, Daniel Thalmann

**Credits**

Nadia Thalmann, Daniel Thalmann, Benoit  
Lafleur, and Dominique Boisvert

**Hardware:**

Silicon Graphics IRIS 4D/240 GTX

**Software:**

Human Factory

**Contact:**

Daniel Thalmann  
Computer Graphics Lab  
CH-1015 Lausanne  
Switzerland  
41-21-693-5214  
41-21-693-3909 (fax)

**Flight over Mandelbrot Set**

**Produced by:**

Heinz Otto Peitgen, Hartmut Jürgens, Dietman  
Saupe, and Cornelia Zahlten

**Hardware:**

Silicon Graphics Workstations

**Software:**

Computer Graphics Lab Dynamical Systems,  
University of Bremen

**Contact:**

Hartmut Jürgens  
University of Bremen, FB3  
Bibliothekstr. 1  
D-2800 Bremen 33  
West Germany  
49-421-218-2926  
49-421-218-4236 (fax)

**The Formation of the Solar System**

**Produced by:**

San Diego Supercomputer Center Advanced  
Scientific Visualization Laboratory

**Credits:**

David Nadeau, Holliday Horton, Kevin Landel,  
Edward Yaffa, T. Todd Elvins, and Merry Maisel

**Hardware:**

Silicon Graphics 4D/70

**Software:**

Alias

**Contact:**

David R. Nadeau  
San Diego Supercomputer Center  
Advanced Scientific Visualization  
Laboratory  
Box 85608  
San Diego, CA 92186-9784  
619-534-5062  
619-534-5113 (fax)

**Getting into Art**

**Produced by:**

David S. Ebert, Julia M. Ebert, Keith M. Boyer

**Original Music and Soundtrack:**

Rohan De Livera

**Eye Animation**

Julia M. Ebert

**Animation Playback System**

Rob Rosenblum

**Hardware:**

A network of over 50 HP9000/300 series

**Software:**

Custom: Fog simulation, volume and scanline  
rendering-David S. Ebert; Network Distribution-  
Keith M. Boyer; Animation Language-Bob Manson

**Contact:**

David S. Ebert  
Department of Computer and Information Science  
The Ohio State University  
2036 Neil Avenue  
Columbus, Ohio 43210-1277  
614-228-8412  
614-292-9021 (fax)

**Grinning Evil Death**

**Produced by:**

Mike McKenna and Bob Sabiston, MIT Media Lab

**Credits:**

David Atherton, David Chen, Michael Johnson,  
Peter Schroeder, David Small, Steve Strassmann,  
and Radhika Nagpa



### *Hardware:*

HP 835 Series 9000 Turbo SRX Workstations  
Wacom pressure sensitive tablet, Connection  
Machine II

### *Software:*

Custom dynamic simulation, rendering, cel, and  
multiplane camera simulation

### *Contact:*

Mike McKenna, Bob Sabiston  
20 Ames Street  
E15-023  
Cambridge, MA 02139  
617-253-0661  
617-258-6264

### **Growing Corn**

#### *Produced by:*

Lamb & Company

#### *Animation and modeling*

David Novak

#### *Hardware:*

4070, Abekas A60

#### *Software:*

Wavefront, Lamb & Company Proprietary

#### *Contact:*

Pamela Lehn  
1010 S. 7th Street  
Minneapolis, MN 55415  
612-333-9173  
612-333-9173 (fax)

### **Hadrosaurus**

#### *Produced by:*

Alan Rosenfeld at Videosmith, Inc.

#### *Animation*

Alan Rosenfeld

#### *Scientific Consultant*

Bob Walters

#### *Hardware:*

Silicon Graphics 3130, Silicon Graphics 4D/60  
CS-12

#### *Software:*

Wavefront Technologies, DV8 and in-house code

#### *Contact:*

Alan Rosenfeld  
328 Spruce Street #2  
Philadelphia, PA 19106-4201  
215-288-5050  
215-238-5055 (fax)

### **Heat Pump Summer**

#### *Produced by:*

Lamb & Company, Inc.

#### *Computer Character and Final Edit:*

Lamb & Company, Inc.

#### *Directed by:*

Lamb & Company

#### *Hardware:*

Silicon Graphics IRIS 4D-70, Abekas A60

#### *Software:*

Wavefront and Lamb & Company proprietary

### *Contact:*

Pamela M. Lehn  
Lamb & Company  
1010 S. 7th Street  
Minneapolis, MN 55415  
612-333-8666  
612-333-9173 (fax)

### **Hubble Space Telescope**

#### *Produced by:*

Bob Rossman, Bruce Gil

#### *Direction/Animation:*

Bob Rossman

#### *Models:*

Bruce Gil, Bob Rossman

#### *Hardware:*

Silicon Graphics

#### *Software:*

Wavefront

#### *Contact:*

Bob Rossman  
3618 Olympic Court N.  
Pleasanton, CA 94566  
408-754-9773  
408-742-8462 (fax)

### **IAD**

#### *Produced by:*

Nadia Magnenat-Thalmann, Daniel Thalmann

#### *Credits:*

Nadia Magnenat-Thalman, Daniel Thalmann,  
Richard Laperrière, Eric Bouchard, and Dominiqu  
Boisvert

#### *Hardware:*

Silicon Graphics IRIS 4d/240 GTX

#### *Software:*

Human Factory

#### *Contact:*

Daniel Thalmann  
Computer Graphics Lab  
Swiss Federal Institute of Technology  
CH-1015 Lausanne, Switzerland  
41-21-693-11-11  
41-21-693-39-09

### **In Search of the Fingerprints of God**

#### *Produced by:*

Mark Bajuk, Matthew Arrott

#### *Animators:*

Mark Bajuk, Matthew Arrott, Jeffrey Thingvold,  
Jeffrey Yost

#### *Editor:*

Robert Patterson

#### *Camera:*

Vincent Jurgens

"Two guys from Chicago"

Produced and directed by Dan Boord

#### *Hardware:*

Visualization: SGI 4d/240 GTX

Sonification: Platypus

#### *Software:*

Visualization: Wavefront Technologies

Sonification: Kyma

In-house

### *Contact:*

Colleen Bushell  
152 Computing Applications Building  
605 E. Springfield Avenue  
Champaign, IL 61820  
217-244-6830  
217-244-1987 (fax)

### **Interstitial Dreamin'**

#### *Produced by:*

Intelligent Light

#### *Producer:*

Jeanne Mara

#### *Technical Director/Animator:*

John Chekan

#### *Modeling/Production Assistant:*

Shane Wagner

#### *Special Thanks:*

Gianluca Paladini, Gordon Acocella, Art Zysk

#### *Music:*

Bill Frisell

#### *Band:*

"Hang Dog"

#### *Hardware:*

HP/Apollo Computer Network, Truevision Vista  
Frame-Buffer

#### *Software:*

Intelligent Light 3DV System

#### *Contact:*

Jeanne Mara  
Intelligent Light  
P.O. Box 65/17-01 Pollitt Drive  
Fair Lawn, NJ 07410  
201-794-7550  
201-794-6215 (fax)

### **Invertebrate Models**

#### *Produced by:*

Kerry B. Clark

#### *Hardware:*

Mac II, Julian Systems, NTSC converter

#### *Software:*

Swivel 3-D, Macromind Director

#### *Contact:*

Kerry B. Clark  
Professor of Biological Sciences  
Florida Institute of Technology  
Melbourne, FL 32901-6988  
407-768-8000 ext. 8195  
407-984-8461 (fax)

### **The Itsy Bitsy Spider**

#### *Produced by:*

Pratt Institute Graduate Students

#### *Credits:*

Theresa Bextermiller, Rafael Castelblanco, Gina  
Coniglio, Suck Il Hong, Michael Hunter, Kan  
Kanzake, Tom Minnefor, Venantius Pinto, Lino  
Ribolla, Kim Richmond-Jeffers, and Tso Feng Yeh

#### *Hardware:*

SGI Iris, Sony BVU950

#### *Software:*

Alias

*Contact:*

Michael O'Rourke  
Computer Graphics Department  
Pratt Institute  
200 Willoughby Avenue  
Brooklyn, NY 11201  
718-636-3490  
718-622-6174 (fax)

**Jetsons: The Movie**

*Produced by:*

deGraf/Wahrman for Hanna-Barbera for Universal Pictures

*CGI Effects Supervision:*

Brad deGraf and Michael Wahrman

*CGI Producer:*

Michelle Porter, Anne M. Adams

*Production Manager:*

Craig Newman

*Coordination for Hanna-Barbera:*

Jerry Mills

*Credits for Backgrounds—Head*

*Technical Director:*

Jim Hillin

*Technical Directors:*

Phil Zucco, Brad deGraf

*Additional Technical Direction:*

Larry Malone, Ken Brain, Liza Keith, Jay Sloat

*Credits for Titles—CGI Direction:*

Brian Jennings

*CGI Producer:*

Anne M. Adams

*Design:*

Dale Hergstad

*Additional Art Direction:*

Allen Battino

*Technical Directors:*

Phil Zucco, Brad deGraf, Wendy Elwell, Jay Sloat,

Larry Malone

*Hardware:*

Symbolics 36XX series, IRIS 4D70GT

*Software:*

Symbolics S-Products, Perform Software by deGraf/Wahrman, Inc.

*Contact:*

Michael Wahrman, Sally Syberg  
deGraf/Wahrman, Inc.  
8936 Keith Avenue  
West Hollywood, CA 90069  
213-278-2135  
213-278-2054 (fax)

**Kiddipick Television Commercial**

*Produced by:*

Pixel Perfect

*Concept, Design, Animation:*

Rex McIntosh, John Sheils

*Hardware:*

Cubicomp Picture Maker with RACE render Accelerator

*Software:*

Cubicomp Picture Maker with some special purpose enhancements

*Contact:*

Rex McIntosh  
Pixel Perfect  
P.O. Box 11 189  
200 Willis Street  
Wellington, New Zealand  
64-4-844-189  
64-4-852-749 (fax)

**Le Pantin**

*Produced by:*

Relief, Raymond Perrin and Frederic Nagorny,

*Director of Production:*

Raymond Perrin

*Realisator and Animator:*

Frederic Nagorny

*Music:*

Merjithur, Alain Schneider

*Hardware:*

Station Graphique Ikolight/PC

*Software:*

Relief Process

*Contact:*

Frederic Nagorny, Raymond Perrin  
Relief  
12-20, Rue Voltaire  
93100 Montreuil Sous Bois, FRANCE  
48-57-91-59  
48-57-32-05 (fax)

**Luke Le Block's Daring Escape**

*Produced by:*

J. Gabriel Foster,

*Story and Animation:*

J. Gabriel Foster, Michael L. Sandige

*Hardware:*

Silicon Graphics Power Series, AT&T Pixel Machine

*Software:*

Fly Max II by William R. Bishop, Douglas M. Priest

*Contact:*

J. Gabriel Foster  
839 Pearl Street  
Boulder, CO 80302  
303-440-9631  
303-440-4421 (fax)

**Magma Tours**

*Produced by:*

Ohshima-Machi, Tanseisah Co. Ltd.

*Client:*

Ohshima-Machi

*Planning:*

Izu Ohshima Museum of Volcanoes

*Chairman:*

Kazuaki Ito

*Produced:*

Tanseisya Co. Ltd. Imagica Corp., Links Corp.

*Supervisor:*

Takashi Hamada (University of Tokyo)  
Satoquo Tateno (University of Tokyo)

*Executive Producer:*

Minoru Manabe, Shizuo Ohashi

*Producer:*

Hiroshi Ajisawa

*Director:*

Toshiyuki Kasama

*Production Manager:*

Makoto Sasao

*CG Director:*

Yuji Hamajima

*CG Designer:*

Shoko Kitamura, Midori Nagai, Makoto Sugawara,  
Ryuichi Snow, Masafumi Imanishi

*CG Technical Staff:*

Yoshihisa Hirano, Kohichi Noguchi  
SFX Imagica Corp. Akira Takimoto, Sadanori Inada

*Cameraman:*

Shinichi Ohoka

*Lightman:*

Kazuo Takano

*Production Collaboration:*

Animation Staff Room Inc., Cinq Art

*Film Processing and Video editing:*

Imagica Corp.

*Music and Sound Effects:*

Media Art Creation, Yasuhiro Kawai

*Redoring Studio:*

Take One Studio

*Thanks to:*

Takash Fukumoto

*Contact:*

Hiroshi Ajisawa  
3-13-6 Higashi-shinagawa  
Shinagawa-ku  
Tokyo, 140 JAPAN

**Mathematics! Similarity and the Story of  $\pi$**

*Produced by:*

Jim Blinn, Projects Mathematics!  
Caltech

*Credits*

Tom Apostol, Jim Blinn, Don Delson

*Hardware:*

HP Vectra 25, 386 based PC clones

*Software:*

Home grown

*Contact:*

Jim Blinn  
305 S. Hill Street  
Pasadena, CA 91106  
818-356-3758  
818-356-3763 (fax)

**The Nature**

*Produced by:*

Dentsu Inc./Tokyu Agency Inc.  
Client, The Ministry of Postal Services,  
Nippon Telegraph and Telephone Corp., and  
Kokusai-Denshindenwa Company

*Producer and Script:*

Madoka Katoh (Dentsu Inc.)

*Producer:*

Haruo Murao (Intervoice Inc.)  
Tatuhiko Akamatu (Cinesell Japan Inc.)



*Assistant Producer:*

Hiroshi Soma (Dentsu Prox Inc.)

*Director:*

Jyun Asakawa

*Assistant Director:*

Shinji Ootake

*Camera:*

Kiyoshi Nishiura

*Light:*

Noboru Mori

*Film Editing:*

Hideaki Inoue

*Music Composer:*

Akira Inoue

*Links Corporation—CG Staff*

*CG and SFX Producer:*

Masaaki Taira

*CG Director:*

Hideki Nakano and Takahiko Akiyama

*Creator:*

Jyun Watanabe and Kimiko Kai

*Animator:*

Norio Saito

*Technical Manager:*

Kotaro Abe

*Technical Director:*

Masanori Ihara, Takahiro Yamamoto, Yoshihisa

Hirano and Koichi Noguchi

*Software Programmer:*

Toshio Tukada and Ahinji Tanaka

*System Engineer:*

Atushi Shiokawa

*Production Manager:*

Hiroyuki Seshita

*Tree Simulation:*

Cirado (France), Phillipe de Reffye, Daniel

Barthelemy and Pierre Dinouard

*NAMCO CG Project—Creators:*

Kenji Watanabe, Kazutaka Shirato, Jyun Watanabe,

Koichi Hiraga, Yasuo Ooba, Tohiaki Kato, Akiko

Wakabayashi and Tatushi Tuboi

*Film Recording:*

Kodak Imagic K.K.

*Nega Editing:*

Yoshio Naganuma

*Film Processing*

Imagic Corporation

*Optical:*

Makoto Nakamura (Imagica)

*Timing:*

Yoshiyuke Kiga (Imagica)

*Optical Advisor:*

Yutaka Kawamura

*Music Producer:*

Akio Oomori

*Music Director:*

Naoto Sekiguchi

*Sound Effects:*

Masatoshi Nizumachi

*Hardware:*

LINKS -2 (Original Custom made), SUN 4/280

Silicon Graphics IRIS -4D

*Software:*

Original

*Contact:*

Masaaki Taira

3-13-6, Higashi-shinagawa

Shinagawa-ku

Tokyo, 140 JAPAN

03-450-8181

03-471-2607 (fax)

**1990 Namco**

*Produced by:*

Namco Ltd.

*Hardware:*

Iris, Sun4, Mips, News

*Software:*

Namco Original

*Contact:*

Kenji Watanabe

Namco CG Project

Yokohama-Mirai-Kenkyujo

Kohoku-ku Yokohama JAPAN

81-45-593-0711

81-45-592-8086 (fax)

**Numerical Simulations of Cosmic Jets**

*Produced by:*

San Diego Supercomputer Center

*Credits:*

T. Todd Elvins, Jim McLeod, Dave Nadeau, Eddie

Yaffa, Kevin Landel, Merry Maisel

*Hardware:*

Cray XMP/48, Sun3/160, Pixar Image Computer

*Software:*

SDSC Imaging Code, NRAO Simulation Code

*Contact:*

T. Todd Elvins

c/o SDSC

Box 85608

San Diego, CA 92138-5608

619-534-5000

619-534-5113 (fax)

**Occam's Razor**

*Produced by:*

Hugh Bridgeford

*Credits:*

Electronic Visualization Lab, Design Visualization

Lab, U of I Chicago

*Hardware:*

Silicon Graphics Personal Iris

*Software:*

Alias

*Contact:*

Hugh Bridgeford

245 W. North #213

Chicago, IL 60610

312-996-0156

312-413-0024 (fax)

**One Night**

*Produced by:*

Hiromi Ono

*Voice:*

H. Miyoshi

*Sound:*

Y. Kawasaki

*Hardware:*

Symbolics 3650

*Software:*

Symbolics paint and animation system, original

*Contact:*

Hiromi Ono

High Teck Lab, Japan Inc.

1-4-1 Higashiyama, Meguro-Ku

Tokyo, 153 JAPAN

81-3-711-5111

81-3-711-5110 (fax)

**Open Road**

*Produced by:*

Post Effects

*Credits:*

Don Hoeg, Joe Langenfeld, Mike Leben, Mark Kolb,

Eric Armstrong, Janet Renté

*Hardware:*

IMC Motion Control Camera Lifter, DFX

Composium, D1 and D2 Compositing

*Software:*

Alias/Z

*Contact:*

Don Hoeg

Post Effects

400 W. Erie

Chicago, IL 60610

312-944-01690

312-944-4989 (fax)

**Pacific Data Images**

*Produced by:*

Pacific Data Images, Inc. is: Shoshana Abrass,

Nestor Aguinaldo, Carlos Arguello, Howard E.

Baker, Thad Beier, Susan B. Bentley, Ken

Bielenberg, Sharon Calahan, Richard Chuang,

Michael Collery, Jane DeKoven, Jamie Dixon,

Theresa Ellis, Terry Emmons, Glenn Entis, Debbie

Gaeta, Ray Giarratana, Deborah Giarratana, Steve

Goldberg, Rex Grignon, John Gross, Raman Hui,

Nick Ilyin, Tim Johnson, Mary Keenan, Larry

Lessler, Brad Lewis, Shae McClory, Susan McVey,

Shawn Neely, Doug Nichols, Joe Palrang, Janet

Rentel, Carl Rosendahl, Karen Schneider, Jim Six,

Tod Snook, Mark Sorensen, Lucy Torres, Dick

Walsh, Graham Walters, Jim S. Ward, and Patty

Wooton

*Hardware:*

Raster Tech frame buffers, Mips and Ridge

Computers

*Software:*

PDI In-house Proprietary

*Contact:*

Debbie Gaeta

1111 Karlstad Drive

Sunnyvale, CA 94089

408-745-6755

408-745-6746 (fax)

### **Paris Dakar 90**

#### *Produced by:*

La Cinq

#### *Credits:*

Luc Froemucher, Sylvain Doros, Alain de Hoe,  
Alain Duval, Andre Bellaiche, Ivan Patterntregor

#### *Hardware:*

Silicon Graphics 4D80, 4D20

#### *Software:*

TDI Explore

#### *Contact:*

Alain Guiot

Videosystem

707 Rue Faubourg Saint-Honoré

75008 Paris, FRANCE

1-42-56-42-33

1-45-63-68-35 (fax)

### **Pepsi Power Hour**

#### *Produced by:*

Topix Computer Graphics and Animation

#### *Producer:*

Chris Wallace

#### *Art Director:*

Harold Harris

#### *Animation:*

Harold Harris, John Mariella, Bob Munroe, Denis  
Gauthier

#### *Hardware:*

Silicon Graphics IRIS 4D70

#### *Software:*

Wavefront, custom

#### *Contact:*

Stephen Price

217 Richmond Street West

Toronto, Canada M5V-1W2

416-971-7711

416-971-6188 (fax)

### **Pittsburgh Supercomputing Center, Scientific Visualization**

#### *Produced by:*

Pittsburgh Supercomputing Center

#### *Producers:*

Anjana Kar, Joel Welling, Gray Lorig, Margaret  
Schneider

#### *Credits:*

Jeffrey M. Knerr, Jon M. Morse, Dave Deerfield,

Darrin York, Gray Lorig

#### *Hardware:*

Diaquest controller, Umatic (Sony), Cray

#### *Software:*

Draw CGM, Oasis, GPLOT

#### *Contact:*

Anjana Kar/Joel Welling

Pittsburgh Supercomputer Center

4400 Fifth Avenue

Pittsburgh, PA 15213

412-268-4960

412-268-5832 (fax)

### **The Politics of Pleasure/ Papilloma Virus**

#### *Produced by:*

Stephan Myers, Donna Cox, Ellen Sandor at the  
Electronic Visualization Laboratory at UIC

#### *Musical Track:*

"Slip of the Tongue" by Art of Noise

#### *Hardware:*

AT&T Pixel Machine 946dX with Sun 3/280

#### *Software:*

AT&T pixel Machine Ray lib

#### *Contact:*

Stephan Meyers

Electronic Visualization Laboratory

Box 4348 M/C 154

Chicago, IL 60680

312-996-3002

312-413-0024 (fax)

### **The Process of Wound Healing**

#### *Produced by:*

Atelier Bister-Animation Art GMBH

#### *Design/Animation:*

Jules Bister

#### *Comment:*

Elka Bister

#### *Scientific Research:*

Kel Cohen

#### *Client:*

Beiersporpag

#### *Music:*

D. Bekker

#### *Hardware:*

Kontron Kat386

#### *Software:*

Cubicomp PictureMaker 60 Race Level 3.0

#### *Contact:*

Jules Bister

Atelier Bister-Animation Art

Ludolfstr 42

2000 Hamburg 20

West Germany

49-40-46-1858

49-40-46-3249 (fax)

### **Rai Ciao Go**

#### *Produced by:*

Superflou SRL

#### *Credits:*

Umberto Lazzari, Paolo Bazzani BTS, Cineca

#### *Hardware:*

PC, Apollo, Iris, Cray-VMP

#### *Software:*

In-house

#### *Contact:*

Francesco Chiarini

v.s. Felice 83 40129

Bologna, ITALY

39-51-551515

39-51-582246 (fax)

### **Reveil (Alarm Clock)**

#### *Produced by:*

G. Pansu/Eurocitel

#### *Credits:*

Paul Coudsi, Daniel Boreustein, Hubert Fourneaux,  
Christian Augé

#### *Hardware:*

Silicon Graphics 4D/20, IMC

#### *Software:*

TDI Explore

#### *Contact:*

Hubert Fourneaux

Eurocitel

1 quai Gabriel Péri

9430 Joinville le Pont

33-1-43-97-25-25

33-1-43-97-19-23 (fax)

### **The Robe of an Angel**

#### *Produced by:*

Naoko Motoyoshi

#### *Music Producer:*

Yasuhiro Kawaski

#### *Calligrapher*

Natsumi Toki

#### *Hardware:*

Iris 3030, Iris 4-D, Pixar

#### *Software:*

Wavefront, DDS (original) Pixar

#### *Contact:*

Naoko Motoyoshi

4-24-12 Higashi Koiwa

Edogawa-ku

Tokyo, 133 JAPAN

81-3-672-4516

81-3-711-5110 (fax)

### **Rush Hour**

#### *Produced by:*

Allen Hastings

#### *Hardware:*

Commodore Amiga 2000

#### *Software:*

NewTek LighWave

#### *Contact:*

Allen Hastings

905 W. Middlefield Road #909

Mountain View, CA 94043

415-965-1925

### **Scenes from CPUAX, GaAs INFO**

#### *Produced by:*

TRW Engineering Visualization Center

#### *Credits:*

Robert Small, Lorne Lanning, Drew

Henry, Jim Banister, Jim Mains, Raminta Jautokas,

Cindy Frederick, Josh Gabriel

#### *Hardware:*

Silicon Graphics 4D series

#### *Software:*

Wavefront

#### *Contact:*

Andrew C. Henry

One Space Park Drive R4/1183

Redondo Beach, CA 90278

213-814-4830

213-812-7110 (fax)



## **Screen Play**

### *Produced by:*

Rafael Martinez, Frederic Nery  
Pygme Production

### *Hardware:*

Silicon Graphics

### *Software:*

Softimage 4D Creative Environment

### *Contact:*

Rafael Martinez  
Pygme Production  
4 Rue de la Republique  
34000 Montpellier  
FRANCE  
33-67-58-05-60  
33-67-55-97 (fax)

## **sfpg—Selected graphics**

### *Produced by:*

Michael Wills

### *Credits:*

Kirk Jay McInroy, Rick McKee, Michael Willis,  
Tony Lupidi, Rita Zimmerman, Monte Thompson,  
and Mark Raupach

### *Hardware:*

SGI 4D, Sun workstations

### *Software:*

Vertigo, Wavefront

### *Contact:*

Michael Wills  
550 Bryant Street  
San Francisco, CA 94107  
415-495-5595  
415-543-8370 (fax)

## **S.S. Freedom—The Ultimate Challenge**

### *Produced by:*

Intelligent Light, Animation elements from "Space  
Station Freedom Advanced Visualization"  
produced for SDRC

### *Engineering Services*

Intelligent Light

### *Special Thanks*

Jeff Young (SDRC Engineering Services)  
Kelly Carney (NASA LeRC)

### *Hardware:*

HP/Apollo Network, TrueVision Vista Frame  
Buffer

### *Software:*

Intelligent Light 3DV, Geotrans; SDRC Geomod,  
Supertab; MSC/Nastran

### *Contact:*

Steve M. Legensky  
Intelligent Light  
P.O. Box 65  
17-01 Pollitt Drive  
Fairlawn, NJ 07410  
201-794-7550  
201-794-6215 (fax)

## **Sierpinski Blows His Gasket**

### *Produced by:*

John C. Hart and Sumit Das, Electronic  
Visualization Laboratory at University of Illinois  
at Chicago

### *Sound:*

Sumit Das and John C. Hart

### *Hardware:*

AT&T Pixel Machine 964dX, Silicon Graphics  
Personal IRIS, TrueVision Vista, Zenith Z-200 PC,  
Sony BVW-75 Betacam VTR

### *Software:*

Pixel Machine Devtools, C, Silicon Graphics  
Library, TrueVision Stage

### *Contact:*

John C. Hart  
Electronic Visualization Laboratory  
University of Illinois at Chicago  
Box 4348 M/C 154  
Chicago, IL 60680  
312-996-3002  
312-413-0024

## **Sity Savvy**

### *Produced by:*

John Chadwick, Don Stredney at the Advanced  
Computing Center for The Arts & Design

### *Hardware:*

Sun 4/110 Sparcstation Abekas Still Store

### *Software:*

ACCAD and OSGP In-house

### *Contact:*

Don Stredney, John Chadwick  
The Advance Computing Center for the  
Arts & Design  
The Ohio State University  
1224 Kinnear Road  
Columbus, OH 43212  
614-292-3416  
614-292-7168 (fax)

## **Special Effects**

### *Produced by:*

Carl B. Stone, Apple Creative Services

### *Credits:*

John Lasana, Dean Foster, Larry Stead

### *Hardware:*

Macintosh

### *Software:*

Symbolics

### *Contact:*

Carl B. Stone  
Apple Computer, Inc.  
10455 Bandle Drive  
Cupertino, CA 95014  
408-974-4549  
408-866-8516 (fax)

## **Stegosaurus: The Roof Lizard**

### *Produced by:*

J. Donkin, W. Burrows, J. Staveley

### *Director:*

J. Donkin

### *Animation:*

W. Burrows and J. Staveley

### *Writer:*

R. Gebel

### *Sound:*

J. Light, J. Donkin

### *Hardware:*

Sun4-260, Sun Sparcstation, Abekas A60,  
Convex C-1

### *Software:*

In-house ACCAD and preliminary versions of ApE

### *Contact:*

John C. Donkin  
1224 Kinnear Road  
Columbus, OH 43212  
614-292-3416  
614-292-7168 (fax)

## **Thought Grid**

### *Produced by:*

Robert King

### *Animation and Sound:*

Robert King

### *Hardware:*

Amiga 2000

### *Software:*

"Director" Delux Paint III, Perfect Sound

### *Contact:*

Robert King  
10502 N. 53rd Street  
Temple Terrace, FL 33617  
813-985-0023

## **3D Images from Space: The UK Perspective**

### *Producer:*

Philip Eales, Jan Peter Muller

### *Credits:*

Tim Day, David REes, Tony Chan, Paul Otto, Mark  
O'Neill, Paramananda

### *Hardware:*

Network of mixed Sun-3/4 workstations

### *Software:*

UCL Dynamic Visualisation Toolkit and UCL  
Sterio vision GEODEM

### *Contact:*

Dr. Jan-Peter Muller  
Department of Photogrammetry  
and Surveying,  
University College London  
Gower Street, LONDON WC1E 6BT, U.K.

## **Top That**

### *Produced by:*

Animation Lab at the Capital Children's Museum

### *Credits:*

Christopher Grotke, Gael Harlow, Virginia Harlow,  
Robert Beech, Daren Wheeling

### *Hardware:*

Targa Board, 386 At, Vista Frame Buffer

### *Software:*

Pansophic Studioworks 3.2

*Contact:*

Christopher Grotke  
Animation Lab at the Capital Children's  
Museum  
800 3rd Street NE  
Washington, DC 20002  
202-675-6872  
202-675-4140

**Tribune Broadcasting Group**

**Christmas ID**

*Produced by:*

Design/Effects

*Creative Director:*

Kerry Kenemer

*Art Director:*

Fred Sotherland

*Animators:*

Ed Kramer and Barry Dempsey

*Lighting:*

Barry Dempsey

*Modeling:*

Ed Kramer, Barry Dempsey, Greg Killmaster

*Hardware:*

Silicon Graphics 4D-70GT, Abekas A60

*Software:*

Wavefront Advanced Visualizer, Barco Creator

*Contact:*

Barbara Smith  
Design/Effects  
535 Plasamour Drive  
Atlanta, GA 30324  
404-876-7149  
404-876-8956 (fax)

**The Untouchable Diamond**

*Produced by:*

Tsun-chih Lo, Thesis Advisor and Chris Wedge

*Instructor:*

Msaureen Nappi

*Technical Instruction:*

Bruce Wands, John Simon

*Criticism:*

Barbara Nessin

*Music:*

Henry Mancini

*Hardware:*

Silicon Graphics Iris

*Software:*

ALIAS Version 2.4.1

*Contact:*

Tsun-chih Lo  
34-09 Murray Street  
Flushing, NY 11354  
718-939-5646  
718-463-2829 (fax)

**Venus & Milo**

*Produced by:*

Donna J. Cox

*Credits:*

University of Illinois, Art Class 331 and Post  
Production Facility at the National Center for  
Supercomputing Applications

*Hardware:*

Silicon Graphics 220S, Personal Iris Digital frame  
store

*Software:*

Wavefront

*Contact:*

Donna J. Cox  
Beckman Institute  
Drawer 25 - NCSA  
405 N. Mathews Avenue  
Urbana, IL 61801  
217-244-2005  
217-244-2909 (fax)

**Very Few Pixels**

*Produced by:*

Alex George

*Hardware:*

Amiga 2500

*Software:*

D-Paint III, Sculpt/Animate 3D

*Contact:*

Very Few Pixels  
843 Zinnia Lane  
Palatine, IL 60074  
708-359-4151  
708-228-3508 (fax)

**Vision D'Une Schizophrene**

*Produced by:*

Ryoichiro Debuchi, High Tech  
Lab. Japan, Inc.

*Artist:*

Ryoichiro Debuchi,

*Music:*

Yasuhiro Kawasaki, Yuko Takashima

*Hardware:*

Silicon Graphics Iris 4D 70GT

*Software:*

Wavefront, Digital Dynamation System  
Time-Space Converter

*Contact:*

Ryoichiro Debuchi  
High Tech Lab. Japan, Inc.  
Court Setagaya 1-15-11, Michiyuku  
Setagaya-ku, Tokyo 154, JAPAN  
81-3-711-5111  
81-3-711-5110 (fax)

**Visualizing Fermat's Last Theorem**

*Produced by:*

Indiana University Computer Science & CICA

*Concept and Production:*

Andres J. Hanson

*Animation:*

Pheng Heng, Brian Kaplan

*Assistants:*

Dennis Gannon, Rick McMullen, Eric Ost

*Hardware:*

Stardent TITAN, Sony 9850, Lyon-Lamb Minivas

*Software:*

Wavefront, Stardent Doré graphics library

*Contact:*

Andrew J. Hanson  
Computer Science Department  
Indiana University  
Bloomington, IN 47405  
812-855-5855  
812-855-3310 (fax)

**Walk and Run**

*Produced by:*

Superfluo

*Credits:*

BTS, Cineca, Umberto Lazzari, Paolo Bazzani

*Hardware:*

Cray-XMP

*Software:*

In-house

*Contact:*

Francesco Chiarini-Superfluo  
v.s. Felice 83 40199  
Bologna, ITALY  
59-51-551515  
59-51-582256 (fax)





