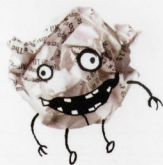
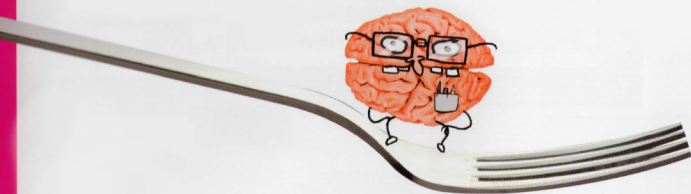




SIGGRAPH2005

Animation Theater Program PART I

ACM SIGGRAPH Video Review Issue 151



DVD
VIDEO

01 Amfraid

6:46

Director: Sophie Van de Velde

Producer: Supinfocom

Contributor: Maud Bonassi

Contact:

Maud Bonassi

Premium Films

130 rue de Turenne

Paris 75003

France

+33.1.42.77.06.39

+33.1.44.54.05.02 fax

maudbonassi@premium-films.com

02 Jona/Tomberry

12:11

Borges meets Mumau in a spinning nightmare. And the baby sings, "No, I won't be scared, old bird, to awake and see that I am dreaming you."

HARDWARE

Apple Macintosh G5

SOFTWARE

Adobe Photoshop, After Effects,

Maxon Cinema 4D

Director: Rosto

Producer: Erik Schut

Contributor: Hanne Dit

Contact:

Rosto Ad

Studio Rosto A.D.

Laurierstraat 107-1D

Amsterdam 1016 PL

The Netherlands

+31.20.4120484

info@jonatomberry.com

www.jonatomberry.com

03 La Derniere Minute

14:35

The adventures of two almost identical brothers. One is forever early and the other forever late, in a world obsessed with Standard Time and Absolute Punctuality.

HARDWARE

PC NT, Silicon Graphics Irix

SOFTWARE

Alias Maya, Pixar RenderMan, Discreet Flame

Director: Nicoles Salis
Producer: Lazennec - Forêt Bleue
Contributor: SFX Supervisor:
Allain Yan

Contact:
Allain Yan
Forêt Bleue
20 Boulevard Poissonniere
Paris 75009
France
+33.1.55.33.18.50
foret-bleue@foret-bleue.com

04 Lucia

8:00

Wandering about the hospital by night, Lucia discovers several x-rays. The image of a skull fires her imagination and before long, dream and reality begin to blur.

HARDWARE

Dell Precision Workstations

SOFTWARE

Alias Maya 4.5, Adobe Photoshop 6.0, Premiere 6.5,
After Effects 5.5

Director/Producer: Felix Gönnert

Contributors: Screenplay, Modeling, Animation, Shading, Lighting:
Felix Gönnert; Editor: Gregor Wille; Cloud Animation: Josef Risling;

Moon Photography: Torsten Krökel; X-Ray Pictures Research:

Friederike Gönnert, Gerhard Spillner, Jürgen Uhlendorf; Hospital Set

Dressing: Sonja Winzenried; Additional Set Dressing:

Tobias Laarmann, Michael Labus;

Foley Artist: Günter Röhn;

Music/Sound: Max Knoth;

Cardiologic Sounds:

Dr. Bruno Moreigne;

Re-recording Mix: Matthias Schurz;

Girl's Voice: Philine Wittur;

Music Recording Engineer: Ingo Baier

Contact:
Felix Gönnert
Schlegelstrasse 10
Berlin D-10115
Germany
+49.3.086.422.040
+49.3.086.422.040 fax
f.goennert@t-online.de

05 Chohon

13:34

In 1940 Korea, Hyun, a young man who serves his nation as a resitant during the era of Japan's rule over Korea, gets injured; a Geisha lady named Hee helps him and they fall in love immediately.

One Geisha colleague betrays them and reveals his identity. But Hyun doesn't know the truth and leaves his lover with hatred. Afterward, Hee is killed by a Japanese policeman. With past reflection, Hyun meets Hee's ghost, and they resolve the misunderstanding and regret.

HARDWARE

Xeon 2GB, Pentium 4, Avid DS

SOFTWARE

Softimage XSI 2.0, Adobe
Photoshop 6.0

Directors: Eunju Kim, Jungsun Choi,
Junsang Yoon, Kinam Kim,
Youngju Park, Yuno Park
Producer: Eunju Kim

Contact:

Jung Sun Choi
Chung-Ang University
GSAIM Office
#221 Huksuck-Dong, Dongjack-gu
Seoul 156-756
South Korea
+82.2.820.5414
+82.2.814.5404 fax
thinksunny@nate.com

06 Twisted City

1:32

The short animation was created using Maya and Shake under the Linux OS. The animation presents London's twisted cityscape using a well tuned space-twisting algorithm developed by the film directors.

Directors: Dominic Halford,
Sam Meisels, Guy Newbery
Producer:
NCCA Bournemouth University
Contributors: Music:
Daniel Halford; Supervision:
Susan Sloan

Contact:

Anargyros Sarafopoulos
NCCA Bournemouth
University, Media School
Talbot Campus Fern Barrow
Poole, Dorset BH12 5BB
UK
+44.1202.965639
+44.1202.595099 fax
asarafop@bournemouth.ac.uk
ncca.bournemouth.ac.uk/main/
staff/anargyros/index.htm

07 City Paradise

5:58

Tomoko comes from Japan to live in London. When she first arrives she hardly understands anyone. She moves into an apartment overlooking the Thames. Lonely and isolated she sits in her flat, dressed in her fins and snorkel to protect her from the London atmosphere. Out in the streets she is frightened by the people she passes. Imagining she might find refuge in a swimming pool, she finds one and goes in, only to be scared once again. In a panic she rushes into the pool to find help, but slips and falls into the water. Below the surface she is caught up by a huge jellyfish that takes her deeper and deeper, until she is dropped in a secret underground world, where little aliens play music and float around under parachutes. Suddenly, she wakes up at the bottom of the pool, thinking that it was all a dream...until she finds a magical flower still in her hand. Back at the surface, in the real London everything seems to have changed. People no longer seem scary, and she finds herself able to talk easily with them.

SOFTWARE

NewTek Lightwave 3D,
Digital Video Toonz, Discreet Flame

Director: Gaelle Denis
Producer: Erika Forzy
Contributors: Louis Clichy,
Tim King, Emma Phillips,
Antoine Moulineau,

Nicklass Andersson, Nikos Gatos, Bruno Hajnal, David Lea, Neil Riley, Chris Knott, Niamh Lines, Ian Sargent, Johnny Still, Cassiano Prado, Ian Murphy, Paul Cheshire, Mark Wilson, Fabrice Gerardi, Erika Forzy, Andrew Ruhemann, Tony Fish, Tim Denin, Jamie Foord

Contact:

Joanna Stevens
Passion Pictures
33-34 Rathbone Place
London W1T 1JN
UK
+44.207.323.9933
+44.207.323.9030 fax
joanna@passion-pictures.com

08 Journey to the West

1:21

This is a short teaser film which got its inspiration from an ancient Chinese tale. It takes place in a mysterious world, a space within the meditated sphere of the Buddha, where mechanical objects replicated after animals and insects fly about and various Asian spirit monsters 'YOUKAI' freely roam. A unique combination of ancient Eastern wisdom with a touch of Japanese humor, depicted with the use of powerful visual presentation only possible in a

production that is completely created in CG animation, with a strong enough story and characters to captivate the hearts of all.

Director: Motonori Sakakibara
Producers: Junichi Yanagihara,
Kyoko Aihara
Contributors: Sprite Animation
Studios

Contact:
Junichi Yanagihara
Sprite Animation Studios
6701 Center Drive West
Suite 1100
Los Angeles, CA 90024
USA
+1.310.641.7400 x281
+1.310.641.7401 fax
oliver@spritee.com
www.spritee.com

09 Hernando

4:01

This musical shows how a crazy conquistador's crew tries to find the hideout of the Famous pirate - Hernando.

Directors: Thomas Bernos,
Nicolas Lesaffre, Jerome Hauptert
Producer: Supinfocom Valenciennes

Contact:
Maud Bonassi
Premium Films
130 rue de Turenne
Paris 75003
France
+33.1.42.77.06.39
+33.1.44.54.05.02 fax
animation@premium-films.com
www.premium-films.com

10 Transformations in Architectural Design

1:15

This animation demonstrates transformations of architectural design. The video shows buildings of two great architects, Gottfried Semper and Le Corbusier, and the emergence of new designs using a novel modeling system to compute design transformations. The modeling system based on design grammars is capable to capture the essence of architectural styles and compute their transformation.

Director: Pascal Mueller
Producer: Luc Van Gool -
ETH Zurich
Contributors: Simon Haegler,
Peter Wonka

Contact:
Pascal Mueller
Computer Vision Lab ETH
Zurich
Gloriastrasse 35
Zurich 8092
Switzerland
+41.1.6325105
pmueller@vision.ee.ethz.ch

11 Recapturing the Lost Colors of BASARA 3:01

A pursuit in the dream of restoring the true colors of the twelve Divine Generals at Shin-Yakushi ji Temple, Nara, Japan. After painstaking research, a Nara Period (710 to 784 AD) statue of the warlord Basara Taisho, a Japanese national treasure made of clay, and presently without any color, has been given the original eighth century colors of red, blue, and gold. Upon measuring the outline of the statue through laser scanning, a method commonly used in archaeological research, the creators entered the details into computer graphics images. Next, the project team analyzed pigment left on the statue's face and body. "Object becomes history when it's gone," says the chief priest of Shin-Yakushiji temple. It will never be, now.

Director: Kazuo Takahashi
Producers: Masayuki Waku,
Yutaka Kusajima, Naomi Matsuzawa
Contributors: DP: Kinichi Hoshino;
Digital Archive Supervisor:
Yutaka Takase; 3D Visualization:
Osamu Yamada; CG Designer:
Koichi Kasai; PA: Kouki Shimiya

Contact:
Naomi Matsuzawa
CAD CENTER
CORPORATION
23-2 Sakamachi
Shinjuku-ku
Tokyo 160-0002
Japan
+81.3.5312.6401
+81.3.5312.6403 fax
n-matuzawa@cadcenter.co.jp
www.cadcenter.co.jp

12 Scent of A Robot 3:48

"Scent of A Robot" is a music video that combines live action footage with animation to portray a human discovering he is a robot. It is a metaphor for all of us, we can be programmed to live our daily lives.

SOFTWARE

Softimage XSI, Adobe After Effects
6.5, Illustrator CS, Photoshop CS,
Apple Final Cut Pro 4.5

Director: UVPFACTORY
Producers: Scott Sindorf,
Damijan Saccio, Brian Welsh
Contributors: Principals, Co-Founders: Scott Sindorf, Damijan Saccio;
Creative Director: Alexandre Moors; Senior Producer: Brian Welsh;
Director of Photography: Nick Tramantano; Designer: Colin Hess;
Animators: Jacob Slutsky, Ryan Bradley, Bashir Hamid; Editor:
Damien Baskette; Production Assistants: Alexis Stein, Pete Miser

Contact:
Damijan Saccio
UVPFACTORY
44 Trinity Place #3
New York, NY 10006
USA
+1.212.483.0040
damijan@uvphactory.com

13 The New Deal

3:16

"The New Deal" video is the result of a collaborative work from a team comprised of animation and graphic artists, a scenarist and music composer. The idea at the heart was to make a modern musical grounded in the roots of hip-hop. The scenario invites us to follow the trajectory of two young underground artists who stand up against the entertainment industry by getting involved in spontaneous creation. Free from any forethought strategy, their way of re-appropriating funk music, participates in the spawn of a wholly new cultural movement.

SOFTWARE

Discreet 3D Studio Max,
Macromedia Flash, Adobe Premiere

Director/Producer:

Baptiste Jaquemet

Contributors: Grafitti: I23 klan;

Music: Junior Market; Script: Olivier Janin

Contact:

Baptiste Jaquemet

98 Rue la Fayette

Paris 75010

France

+33.8.70.26.90.08

baptistejaquemet@yahoo.fr

14 Sealed Lips

2:04

A ventriloquist and his dummy pass an audition in a small theatre.

SOFTWARE

Alias Maya, Adobe Photoshop,
After Effects, Premiere Pro

Directors: Adrien Soyty Liv,

Grégory Mougne, Coline Veith

Producer:

Gobelins, l'école de l'image

Contributors: Adrien Soyty Liv,

Grégory Mougne, Coline Veith

Contact:

Eric Riewer

Gobelins, l'école de l'image

73 Boulevard Saint Marcel

Paris 75013

France

+33.1.40.79.92.40

+33.1.40.79.92.69 fax

cperrin@gobelins.fr

15 Love Letters

4:35

I produced this animation as a way of proposing to my girlfriend. I assembled a team of twenty animators to assist me, including co-workers and students from my 3D character animation class at the Art Institute of California SF. We were able to create approximately four and a half minutes of animation in just over three months. When it was completed, I surprised my girlfriend by bringing her to a local theater where they played the animation on the big screen in front of over 100 of our friends and family. The entire event was filmed for the television show "Perfect Proposal" on TLC.

Director/Producer: Jeff Paul

Contributors: Byoung Hee Cho, David Galindo, Min Lieu,
Mark Roennigke, Niroth Keo, Irene Fung, Matt Carter,

Duylinh Nguyen, Sean Dicken,

Jonathan Choy, Rhett Planas,

Patrick Danaher, Josh Lanada,

Eric Lees, Jason Porter,

Kris Hammond, Ricardo Biriba,

Jee Young Park, Scot Phelps,

Jan Carlee, Min Chang, Jeff Vacanti,

Heechel Nam, Mike Tuomey,

Tim Aldridge

Contact:

Jeff Paul

Art Institute of California - San
Francisco

1170 Market Street

San Francisco, CA 94102-4908
USA

+1.415.412.5872

worldofjeffmail-3d@yahoo.com

www.worldofjeff.net

16 Tippett Studio Creates 'Hell L.A.' & 'Vermin Man' in "Constantine"

2:53

Guided by senior visual effects supervisor Craig Hayes, Tippett Studio turns modern-day Los Angeles into an imaginative post-nuclear environment of Hellish proportions. The fiery urban landscape comes to life with scorched streets and ominous blazing skies. Over 25 shots contain 80 -100 stand-alone elements including procedural fire, cloud and dust elements completing the nightmarish digital backdrop. "Realistic" CG demons populate the city of scarred buildings, created by applying textures to 3D geometry, while props like cars and signs are textured to look realistically distressed.

"The Vermin Man," a highly complex sequence added late in the show, portrays a fight between John Constantine and a moving body of swarming creatures. Vermin Man's face and body contain fourteen different creatures including snakes and centipedes for cheekbones and lips, flies for rotting teeth

and spiders and rats for "fillers." Forty-five hero bugs create the rig allowing animators to form his facial expressions, and the "fabric" of his coat is woven with 100,000 termites.

Key to animating this character is the proxy particle system created by the effects department. This tool is essential in being able to efficiently block out timing, direction, and volume of smaller swarms created as Constantine strikes Vermin Man.

HARDWARE

Custom AMD workstations, custom AMD render farm,
Silicon Graphics CXFS file servers

SOFTWARE

Alias Maya, Pixar RenderMan, Apple Shake

Director: Francis Lawrence

Producers: Lauren Shuler Donner, Benjamin Melniker,
Michael Uslan, Akiva Goldsman, Erwin Stoff, Lorenzo di Bonaventura

Contributors: Visual Effects Supervisor: Mike Fink;

Senior Visual Effects Supervisor: Craig Hayes; Visual Effects

Producers: Amy "Hollywood" Wixson, Jason Heapy; CG Supervisor:

David DeBry; Visual Effects Plate Supervisor: Brennan Doyle;

Visual Effects Associate Producer: Athena Yvette Portillo;

Lead Animators: Simon Allen, Dovi Anderson; Lead Lighting Artist:

Julien Schreyer; Lead Compositors: Matt Jacobs. Dan Cayer;

Lead CG Effects Artist: Daniel Rolinek; Lead Texture Artist:

Renee Binkowski; Lead CG Modeler: Joseph E Hamdorf;

Matchmove Supervisor: Chris Paizis; Lead Rotoscope Artists:

Kenneth Voss, Rex Markle; Visual Effects Editor: Sarah Schubart;

Visual Effects Digital Color Timers: Adam Gerardin,

Matthew Tomlinson; Animators: Jason Armstrong, Jim Brown,

Chuck Duke, Aaron Gilman, Julie Jaros, Michael Kitchen,

Michael Leonard, Guido Muzzarelli, Brian Mendenhall, Jess Vickery;

Character Riggers: Peter Newsome, David Richard Nelson,

Matthew Muntean; CG Lighting Artists: Mimia Arbelaez,

Howard Campbell, Conrad Chu, Aharon Bourland,

Steven Quinones-Colon, Russell Darling, Bernhard VonZastrow,

Krystin Johnson, Lissa G. Klanor, Davy Wentworth, John Rader;

Compositors: Misty Segura Barbour, Michael Clemens,

Chris Gibbons, Daniel Bryant, Aruna Inversin, Jonathan Knight,

Gerard Benjamin Pierre,
Chris Morley, Alexandra
Papavramides-Pierre,
Ari Rubenstein, David Schnee,
Mark Siew; CG Effects Artists:
Nathaniel Hunter, Uma Havaligi,
Andrew Young Kim, James Jackson,
Rosa Lin, Clear Menser, Melissa Tseng,
Konstantin Promokhov, Ralph Sevazlian; Texture Artists:
Paul Champion, Bradford deCausin, Nathan Stinus Fredenburg,
Ruth Caspary, Sara Simon; CG Modellers: Sven Jensen, Paul Zinnes,
John Koester; Matchmovers: Devin Breese, Tyler Ham,
Dong Yong Kang, Eric Marko, Stephen Moros, Charles Schwartz;
Rotoscope Artist: Shelley Campbell, Lucinda Chee, Robert Dorris,
Kane Brassington, Ramona Martinez, Daniel Riha;
Visual Effects Coordinators: Chris Hall, Naomi Ruth Raine, Kristy Marie King

Contact:
Jay Heapy
Tippett Studio
2741 10th Street
Berkeley, CA 94710
USA
+1.510.649.9711
+1.510.649.9788 fax
jay@tippett.com

17 Nature Sweet “Triage”

0:30

In the commercial we see a selection of real Nature Sweet tomatoes in the produce section of a grocery store. The lights go down as the store closes and the camera pans up to reveal a group of animated Nature Sweet tomato characters in what looks like the Emergency Room of a hospital. It is a scene of carnage. Scores of damaged tomatoes are being treated by a surgeon and some nurses. We see, by means of an x-ray, that some of the tomatoes have internal injuries. The surgeon exclaims, “Don’t these people know you can’t tell what a tomato tastes like by squeezing it?” Another doctor is treating a character with a head contusion, who is barking like a dog. “Stop the abuse”, says the title. “It’s easy to pick a tomato that tastes home grown. Just pick Nature Sweet.”

SOFTWARE

Alias Maya, MacGuff Ligne proprietary software

Directors: Pierre Coffin, Darren Walsh

Producer: Samantha Plaisted

Contributors: Glenn Dady, Tina Johnson, Ashley Bull, Lynn Louria,
Amanda Courria, Jean Poisson, Alexandre Meliava, Nicolas Trout,

Hugo Sands, Elisabeth Patte,
Gael Matchabelli, Lucas Valerie,
Jerome Gordon, Mathieu Gros,
Xavier de l'Hermuziere,
Mathieu Trintzius, Julien Caillaud,
Bruno Pierron, Alain Duval,
Eric Adelheim, Magalie Barraban

Contact:
Joanna Stevens
Passion Pictures
33-34 Rathbone Place
London W1T 1JN
UK
+44.207.323.9933
+44.207.323.9030 fax
joanna@passion-pictures.com

18 (YKK AP Commercial) "Evolution" 1:30

A simple cubic object transforms into a more complex object, adapting and growing in a varying environment. The object starts from a simple cube in the room advancing into the streets and the city. The object is carefully lighted and composited into numerous atmospheric situations.

HARDWARE

Dell workstation 3GHz,
Windows XP

SOFTWARE

Discreet 3D Studio MAX,
Adobe After Effects 5.5

Directors: Takeshi Yoon,
Koichi Iguchi
Producers: Masaki Yanai, Akito Hirai

Contact:
Kentaro Ohira
Omnibus Japan
Minato-ku Akasaka 7-9-11
Tokyo 107-0052
Japan
+81.3.6229.0609
ohira@omni.co.jp

19 **Samuroid Zero: Evil Does Not Conquer All**

2:31

On an unknown planet in the distant future, it is a time of war. Four ninjas, including a beautiful but mysterious girl named Kureha, set out on a quest to recover relics that, legend says, will bring peace to the land.

Their mission is to seek out a 500 year-old warrior, an invincible samurai who served the last emperor of peace and now guards the Three Holy Relics. Sent by the evil warlord Leshiro, the ninjas must attempt to destroy the samurai and return with the relics so that Leshiro can rule the world. As their

adventure unfolds, Kureha learns that her past and the samurai's are bound together; to destroy him would be to destroy her self.

Director: Yuichi Abe
Producer: Sumiji Miyake
Contributors: Shuzo John Shiota,
Hideyuki Yamamkuni

Contact:
Chihiro Yoshida
Polygon Pictures
Shinjuku TX Bldg. 6F 1-3-21
Okubo
Shinjuku-ku
Tokyo 1690072
Japan
+81.3.5287.4285
chihiroy@ppi.co.jp

20 (The Making of) "Life In The Fast Lane" 3:21

Curious Pictures and director Noble Jones produced a 60 second and 30 second spot for TV Land titled "Life in the Fast Lane." The goal was to make it feel like a real chair was actually driving the actor home through rush hour traffic. Performance and dynamic live action sequences took precedence over green screen fakes and digital effects, and the director was allowed to shoot his vision in camera. There was no motion control, no locked off cameras, just fluidity. This decision did not come lightly since it required strapping an actor to a variety of rigs including a go-cart chair and motorcycle going down a highway at 50 mph. The spot was entirely pre-visualized in CG before going on location in Toronto. One of the hardest invisible effects was warming the actor after each take in below freezing temperatures on the highway.

Director: Noble Jones
Producers: Kevin Hartman, Alissa Tomson, Michael Hogan,
Amelie Bruun
Contributors: VFX Supervisor: Lewis Kofsky; 2D and Compositing
Artists: Michael DeBeer, Nitant Karnik, Kyle McCulloch,
Nicole Samarron, Anthony Santoro, Maria Rapetskya, Matt Reslier,
Bee Jinn Tan, Scott Winston; 3D Artists: Joao Amorim, Joseph Cross,
Frank Grecco, Ryan O'Phelan,
Matt Reslier, Julio Soto,
Chimin Yang; Technical Support:
Jen Glabus, Bryan Shelton;
Composer: Dave Baron;
Sound Design/Mix: Laki Fotopolus;
Avid Editor: Graham Brennan;
Sound Track: Flower Records;
Music: Sunaga T

Contact:
Lewis Kofsky
Curious Pictures
440 Lafayette, 6th Floor
New York, NY 10003
USA
+1.212.674.1400
lewis@curiouspictures.com

ACM Order # NDVD-151 ISBN # 1-59593-104-X



ACM**SIGGRAPH**

**Order
Information:**

SIGGRAPH Video Review
c/o ACM
PO BOX 11414
New York, NY 10286-1414
USA

phone: +1.800.342.6626 USA/Canada
+1.212.626.0500 International
fax: +1.212.944.1318
email: svrorders@siggraph.org
www.siggraph.org/publications/video-review/SVR.html



Dolby and the double-D symbol are trademarks of
Dolby Laboratories Licensing Corporation.



MANUFACTURED BY
TOSHIBA DIGITAL FRONTIERS INC.



Most of the pieces in this SIGGRAPH Video Review are copyrighted. Therefore, they are not to be duplicated, broadcast, photographed nor edited without the express written permission of the individual copyright holder.